



WAKE COUNTY
PUBLIC SCHOOL SYSTEM

School Enrollment Proposal, 2016-2017

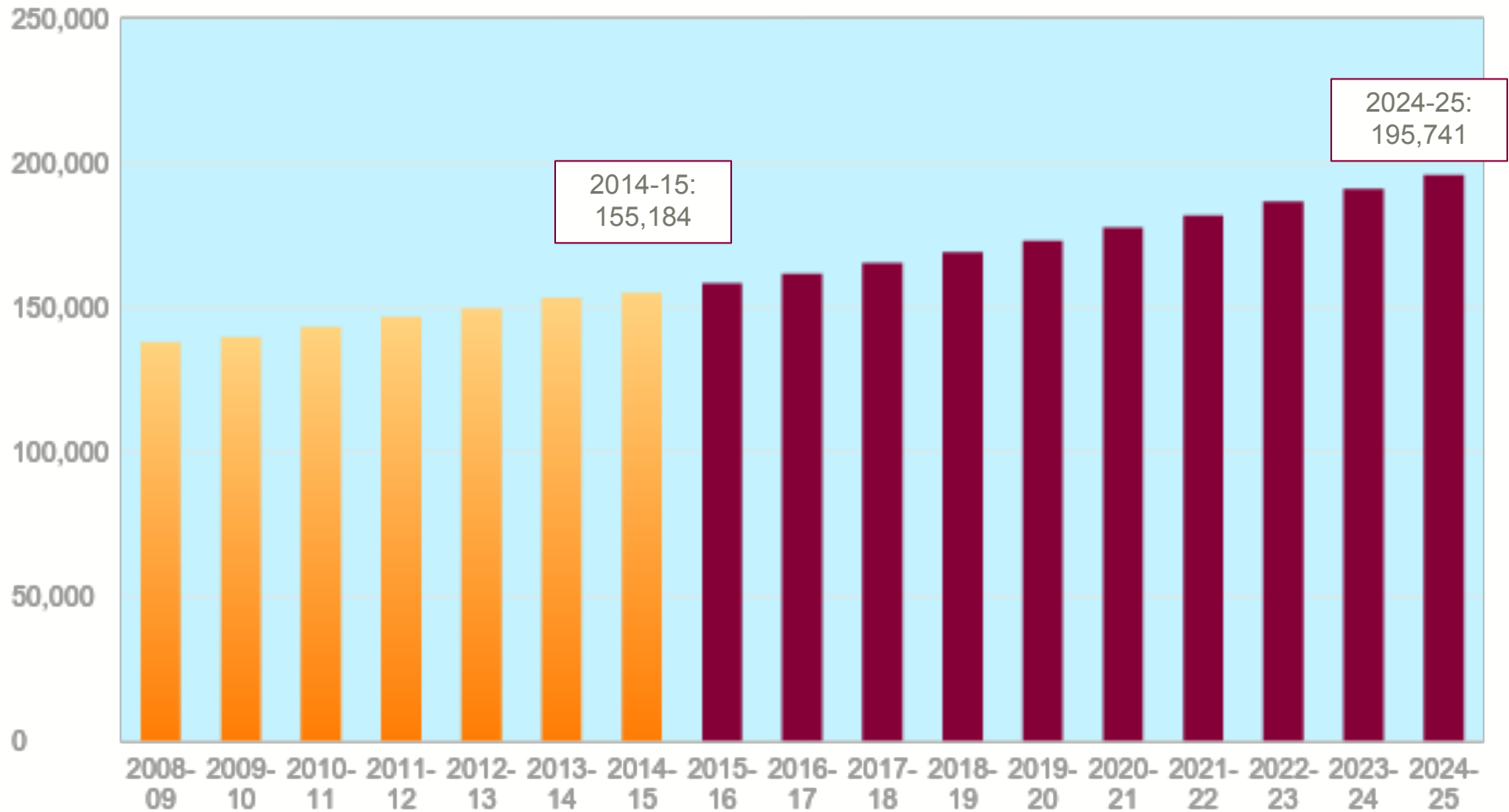
Year Two of a Multi-Year (2015-2018) Approach to Growth Management

SECOND DRAFT, October 6, 2015

Draft 1 Feedback

- Presentations at seven Board Advisory Council meetings
- Online: More than 500 participants offered nearly 1,500 comments
- Changes to the plan made based on parent feedback

It's All About Growth...

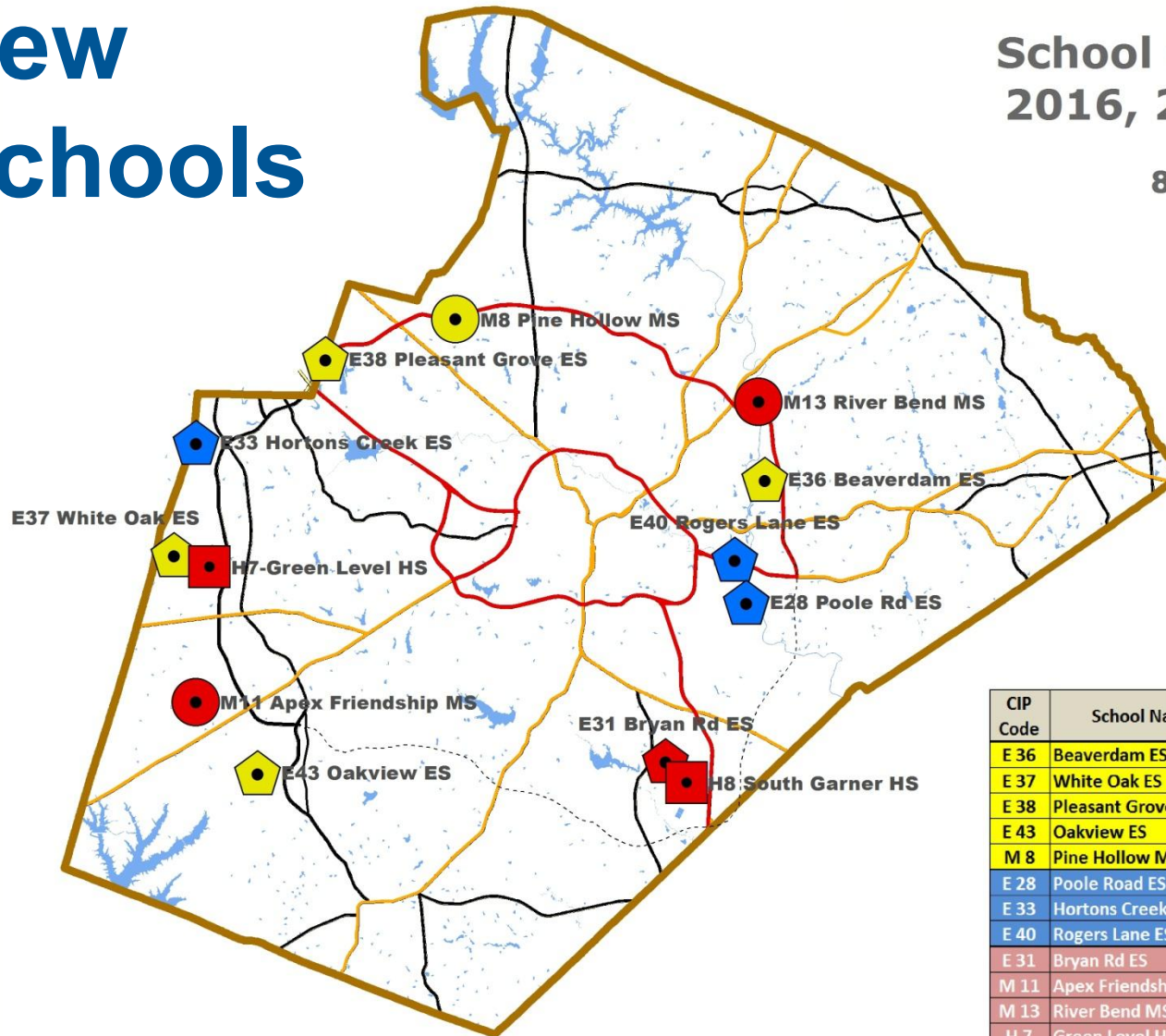


Data Sources:
Enrollment: WCPSS Month-2 ADM, NCDPI; Forecast: OREd/ITRE, May 2015

New Schools

School Openings (13) 2016, 2017 and 2018

8 Elementary Schools
3 Middle Schools
2 High Schools



CIP Code	School Name	Opening 2016-17	Opening 2017-18	Opening 2018-19
E 36	Beaverdam ES	E 36		
E 37	White Oak ES	E 37		
E 38	Pleasant Grove ES	E 38		
E 43	Oakview ES	E 43		
M 8	Pine Hollow MS	M 8		
E 28	Poole Road ES		E 28	
E 33	Hortons Creek ES		E 33	
E 40	Rogers Lane ES		E 40	
E 31	Bryan Rd ES			E 31
M 11	Apex Friendship MS			M 11
M 13	River Bend MS			M 13
H 7	Green Level HS			H 7
H 8	South Garner HS			H 8
School Openings Total		5	3	5



WCPSS Board Policy 6200

Student Assignment

- A. Student Achievement**
- B. Stability**
- C. Proximity**
- D. Operational Efficiency**

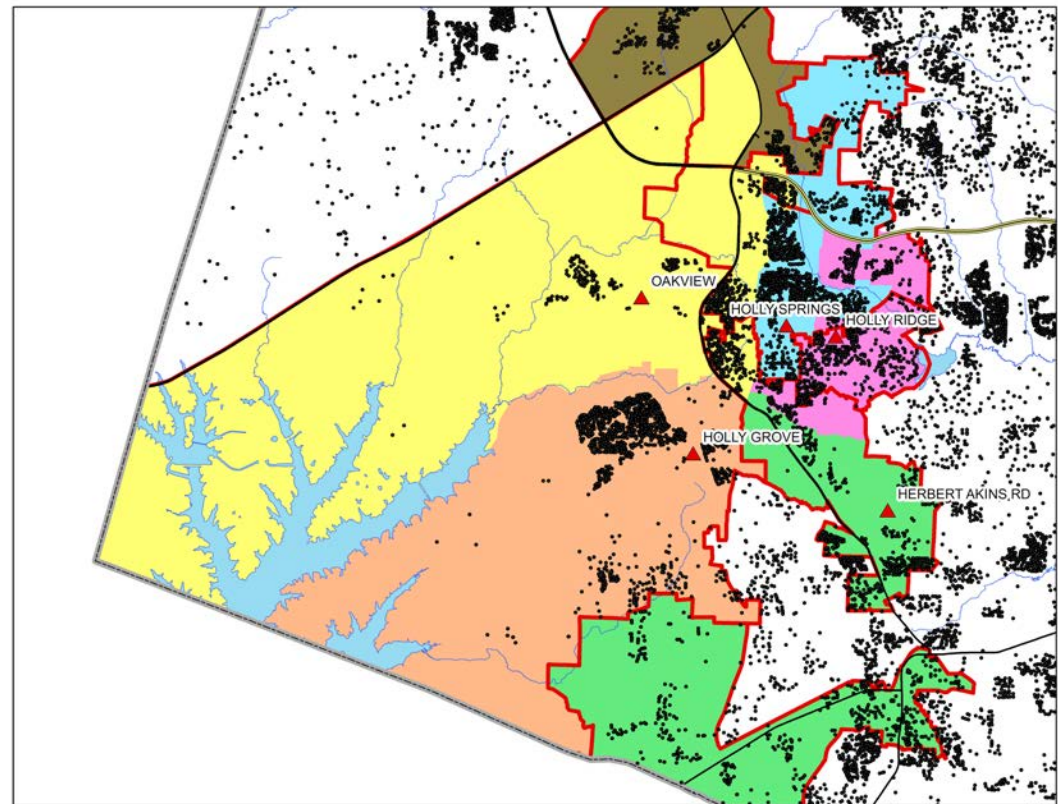
Note: More detailed information is included in addendum

New School – Oakview ES (2016-17)

- Traditional Calendar
- Calendar Option:
Holly Springs ES
- Planned Capacity: 780
- Impacted Areas

Existing School	Util. *
Holly Springs ES	137%
Holly Grove ES	113%
Holly Ridge ES	124%
Apex ES (no students)	N/A
Herbert Akins Rd ES	88%

2016-17 Base Areas



RED = 2015-16 Base Boundary

* Utilization based on 2014-15 NC DPI Month-2 ADM and 2014-15 Planned Capacity

New School – White Oak ES (2016-17)

**** Clarification for Draft 2**

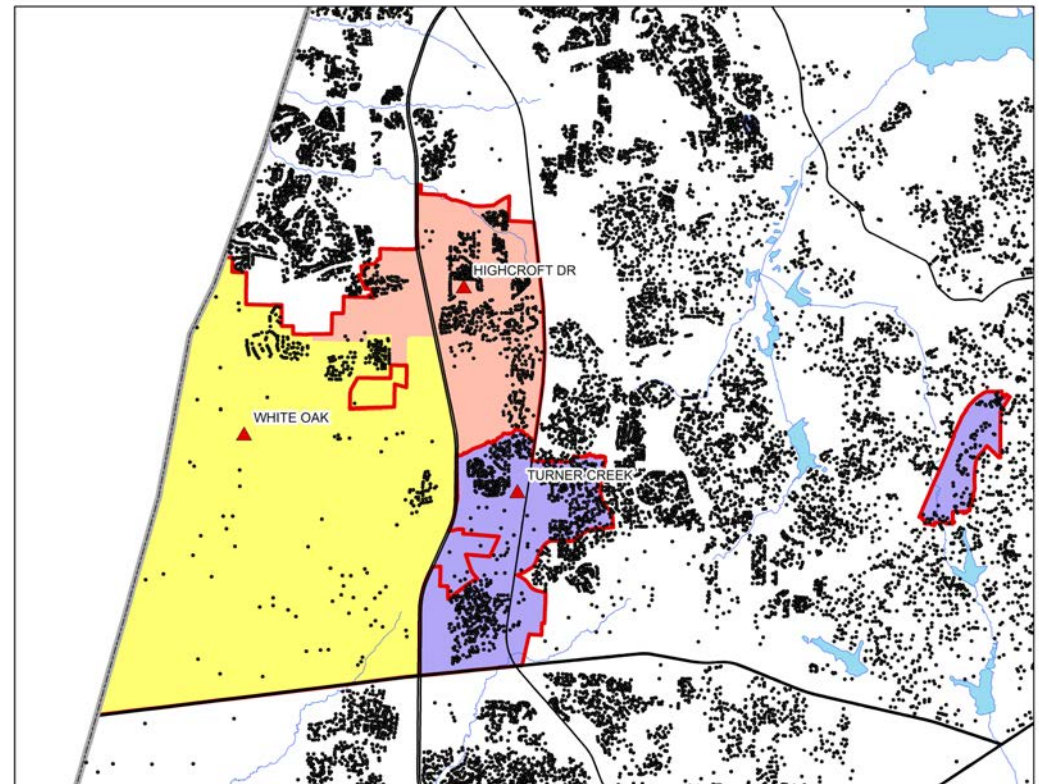
- Traditional Calendar
- Calendar Option:
Turner Creek ES
- Planned Capacity: 780
- Impact Area

Existing School	Util. *
Highcroft Drive ES	136%
Turner Creek ES	91%

“Fork” area of TCES will be base assigned from Mills Park MS to Salem MS for calendar match

White Oak ES will be used as an overflow school for Mills Park ES

2016-17 Base Areas



RED = 2015-16 Base Boundary

* Utilization based on 2014-15 NC DPI Month-2 ADM and 2014-15 Planned Capacity

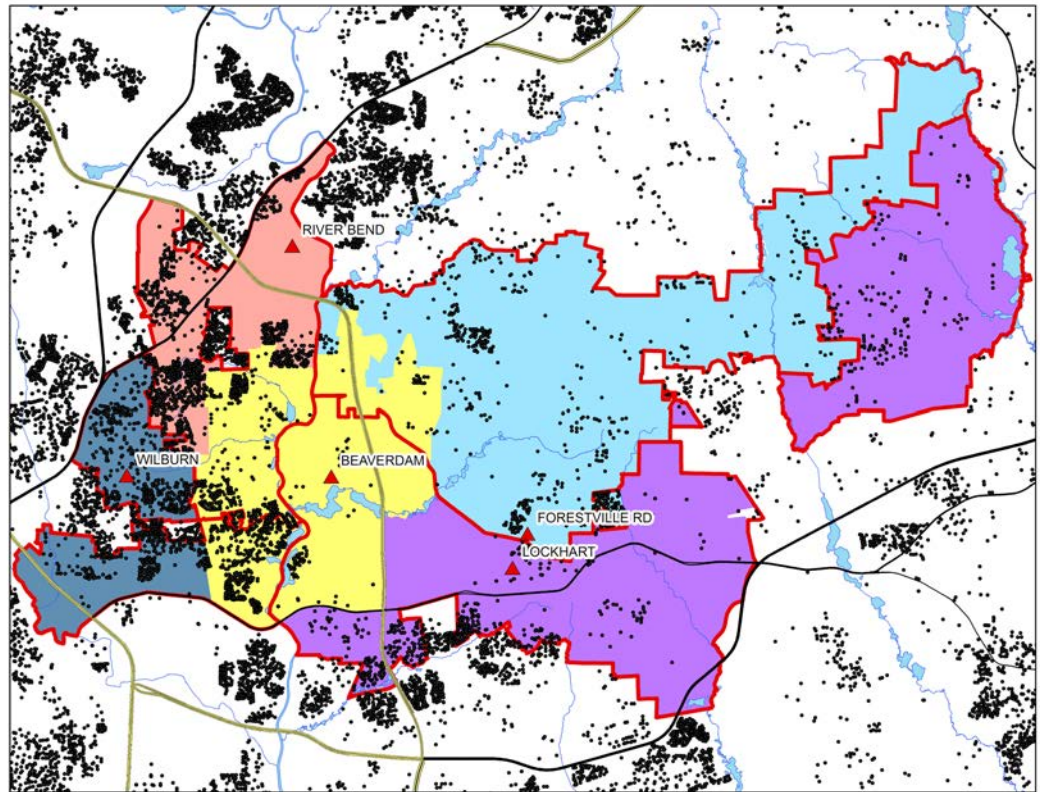
New School – Beaverdam ES (2016-17)

**** Change for Draft 2**

- Traditional Calendar
- Calendar Option:
River Bend ES **Wilburn****
- Planned Capacity: 780
- Impact Area

Existing School	Util. *
River Bend ES	86%
Forestville Road ES	111%
Lockhart ES	135%
Wilburn ES, YR 4 tracks single track capacity	71% 90%

2016-17 Base Areas



RED = 2015-16 Base Boundary

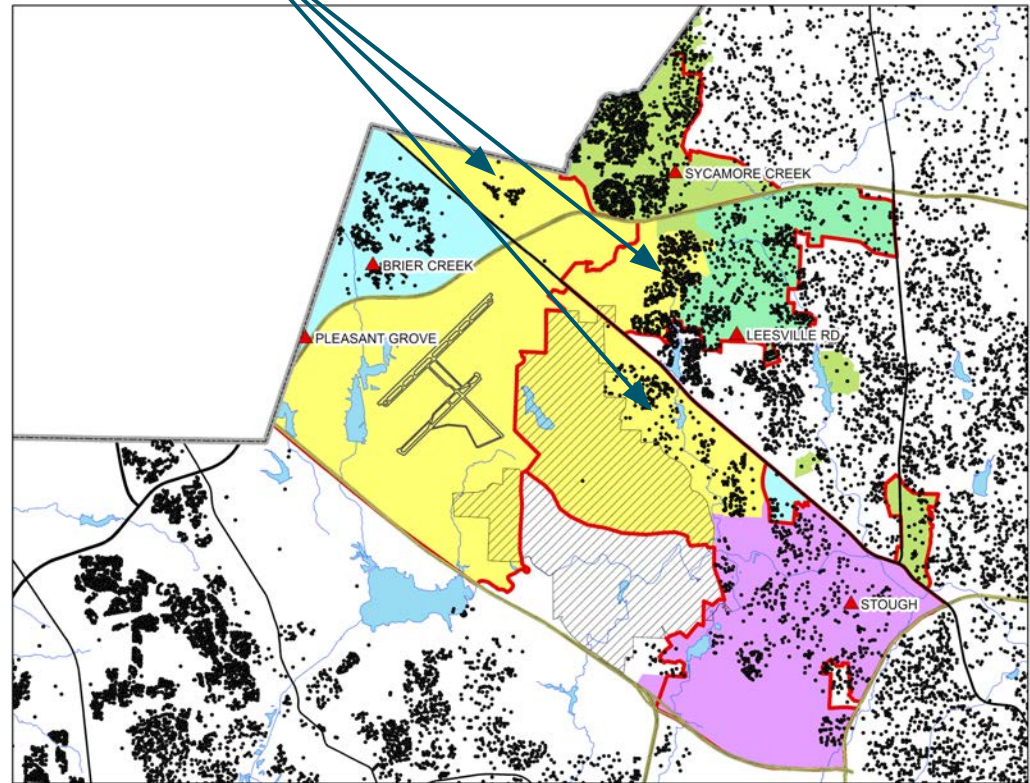
* Utilization based on 2014-15 NC DPI Month-2 ADM and 2014-15 Planned Capacity

New School – Pleasant Grove ES (2016-17)

- Traditional Calendar
- Calendar Option:
Brier Creek ES
- Planned Capacity: 780
- Impact Area

Student density and
Pleasant Grove ES

2016-17 Base Areas



Existing School

Util. *

Brier Creek ES

111%

Leesville Road ES

149%

Stough ES

108%

Area Impacted



RED = 2015-16 Base Boundary

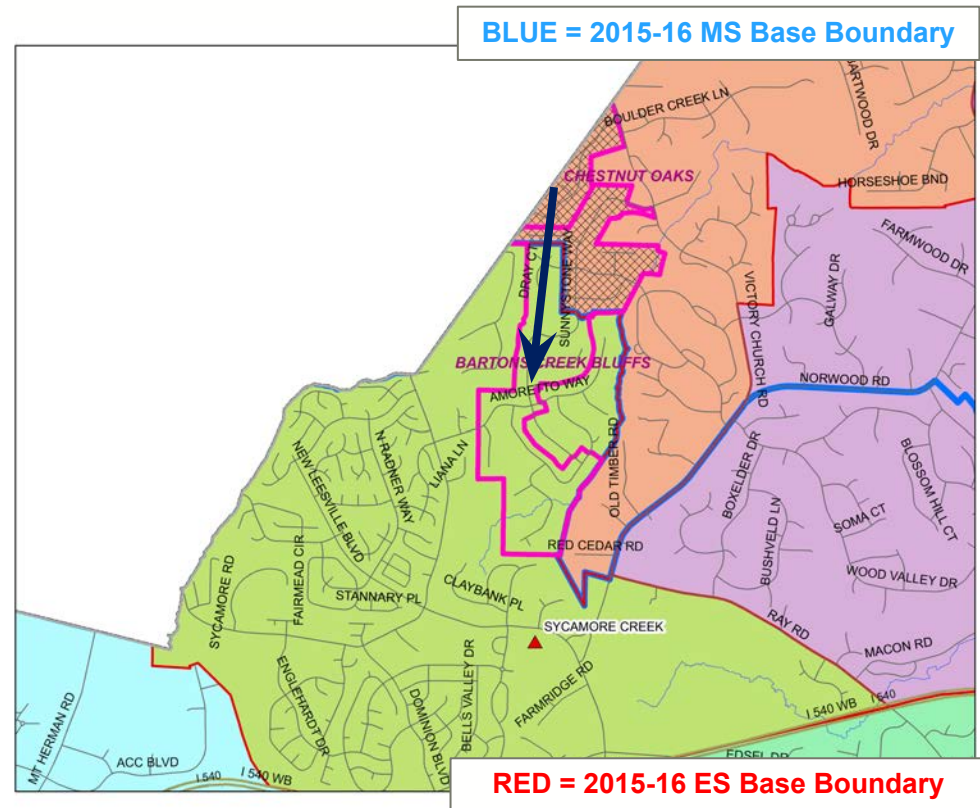
Other Base Attendance Area Adjustments

Bartons Creek Bluffs Subdivision

**** Change for Draft 2**

Bartons Creek Bluffs is split between Sycamore Creek ES / Leesville Road MS and Baileywick ES / West Millbrook MS

Proposed Adjustment:
Assign Bartons Creek Bluffs
and Chestnut Oaks ** to
Sycamore Creek ES / Pine Hollow MS



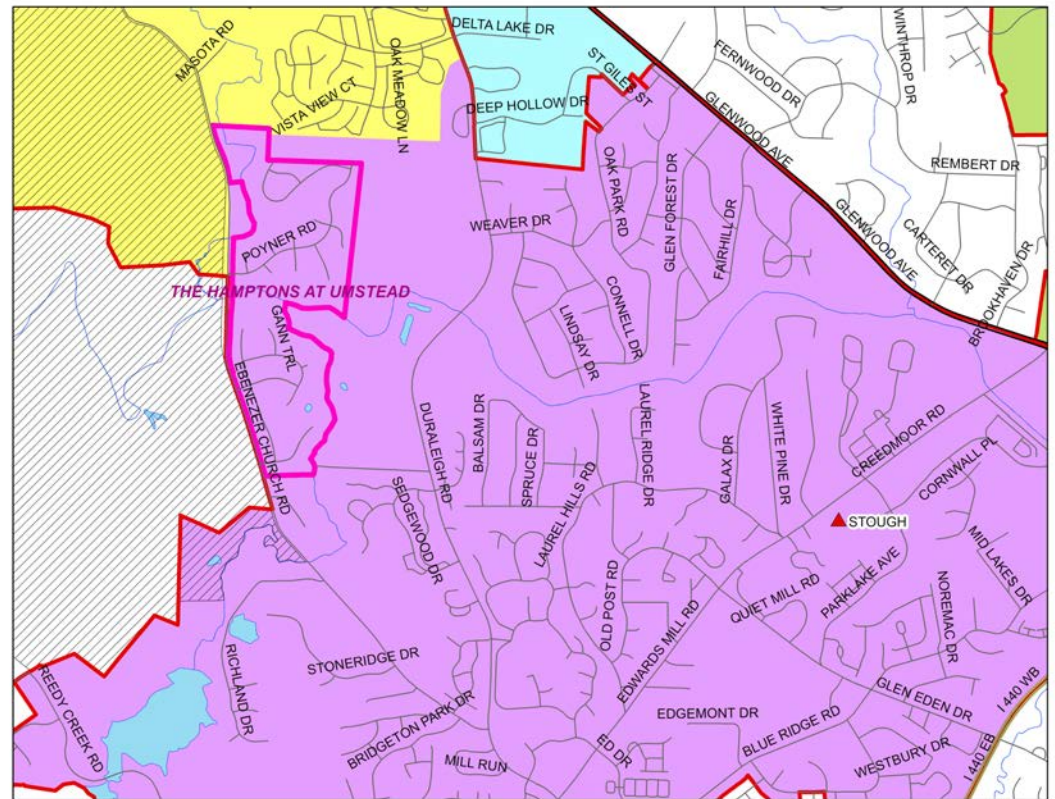
New School – Pleasant Grove ES (2016-17)

**** Change for Draft 2**

**** Split Neighborhood:**

The Hamptons at Umstead would remain assigned to Stough ES / Daniels MS

2016-17 Base Areas



RED = 2015-16 Base Boundary

Policy 6200: Student Achievement

***** Change for Draft 2***

Student populations at each school will provide an optimal opportunity for academic success for all students. Factors for consideration include:

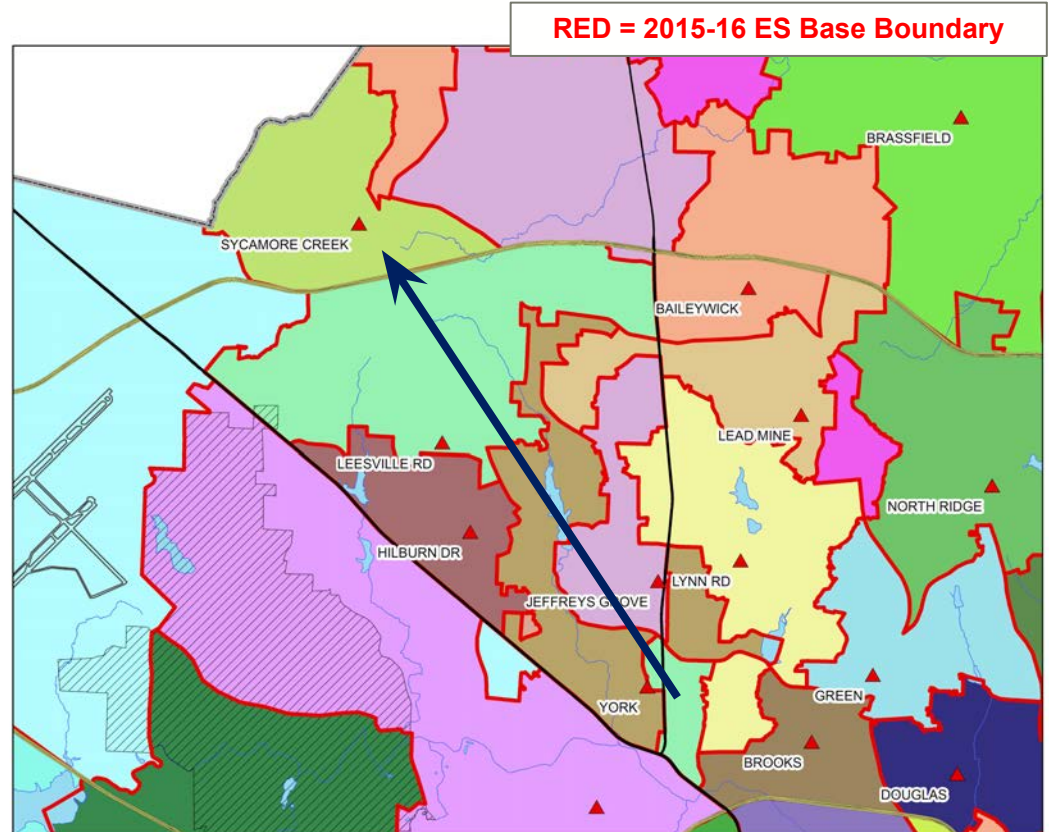
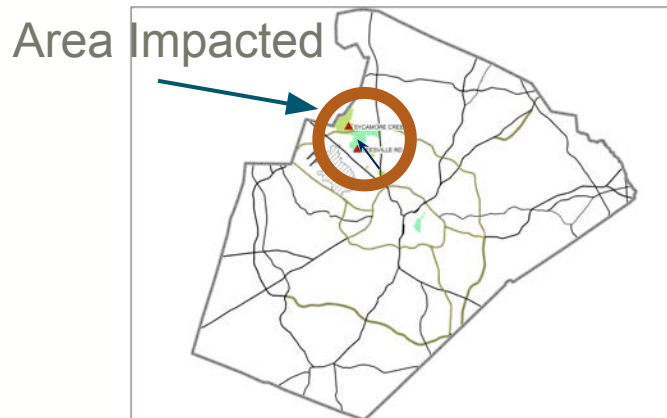
1. Providing an opportunity for families to select calendar, magnet, and application schools to support an individual student's educational needs;
2. Minimizing high concentrations of low-performing students at each school; and
3. Minimizing high concentrations of students from low-income families at each school.

Other Base Attendance Area Adjustments

**** Change for Draft 2**

Satellite near Glenwood and Creedmoor currently assigned to Leesville Road ES / Leesville Road MS

**** Proposed Adjustment:**
Assign Leesville ES and MS satellite to Sycamore Creek ES / Pine Hollow MS



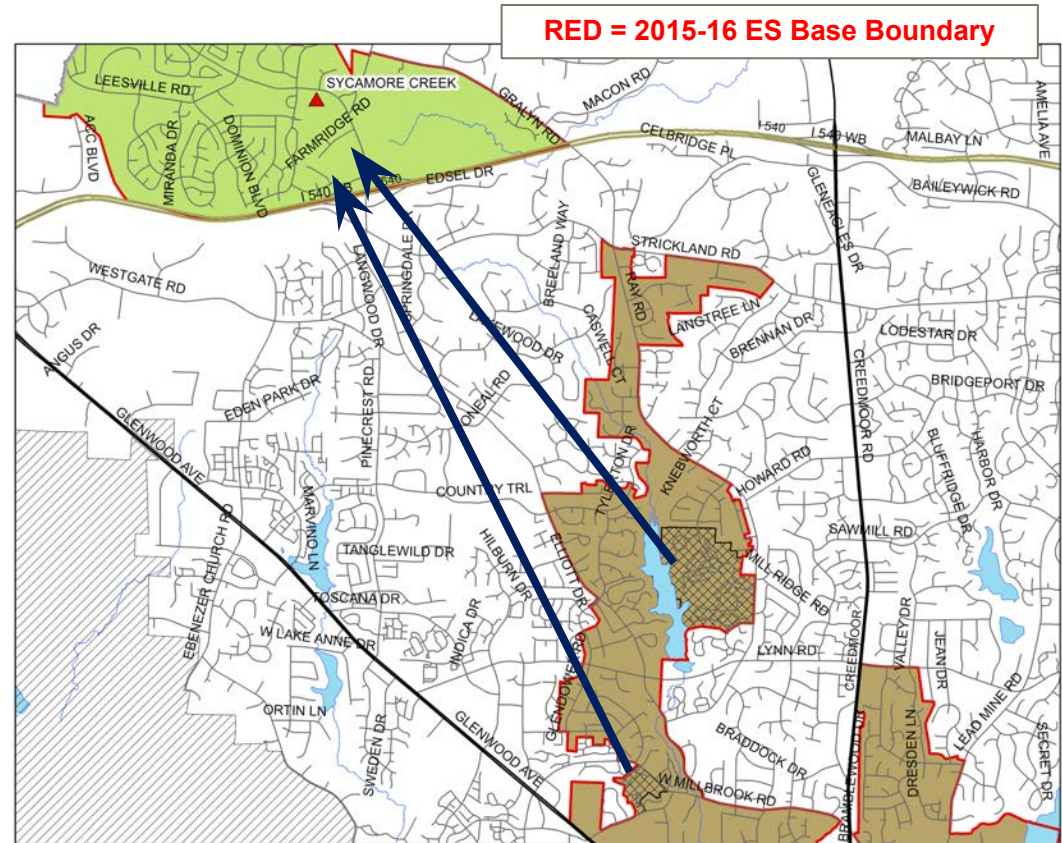
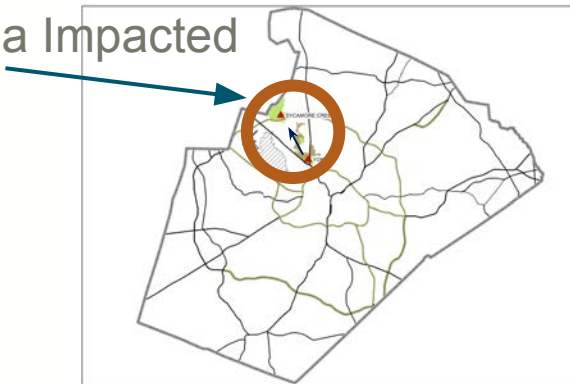
Other Base Attendance Area Adjustments

**** Change for Draft 2**

Neighborhood accessed via Lookout Mountain Rd and neighborhood accessed via Riese Dr currently assigned to York ES / Leesville Rd MS

**** Proposed Adjustment:**
Assign to Sycamore Creek ES / Pine Hollow MS

Area Impacted



Related MS and HS Changes – 2016-17

**** Change for Draft 2**

- Oakview ES – **No recommended changes** due to M11 opening in 2018-19
- White Oak ES – **No recommended changes** due to M11 opening in 2018-19
- Beaverdam ES – **No recommended changes** due to M13 opening in 2018-19
- Pleasant Grove ES – **Recommended MS and HS changes** due to Pine Hollow MS opening in 2016-17:
 - Brier Creek ES, Sycamore Creek ES and **Pleasant Union ES **** will feed to Pine Hollow MS for a **calendar match**
 - Pleasant Grove ES feeder will change from Mills Park MS to Leesville Road MS; the portion currently feeding to Daniels MS will remain at Daniels MS
 - All of the Brier Creek area currently assigned to Panther Creek HS will be assigned to Leesville Road HS

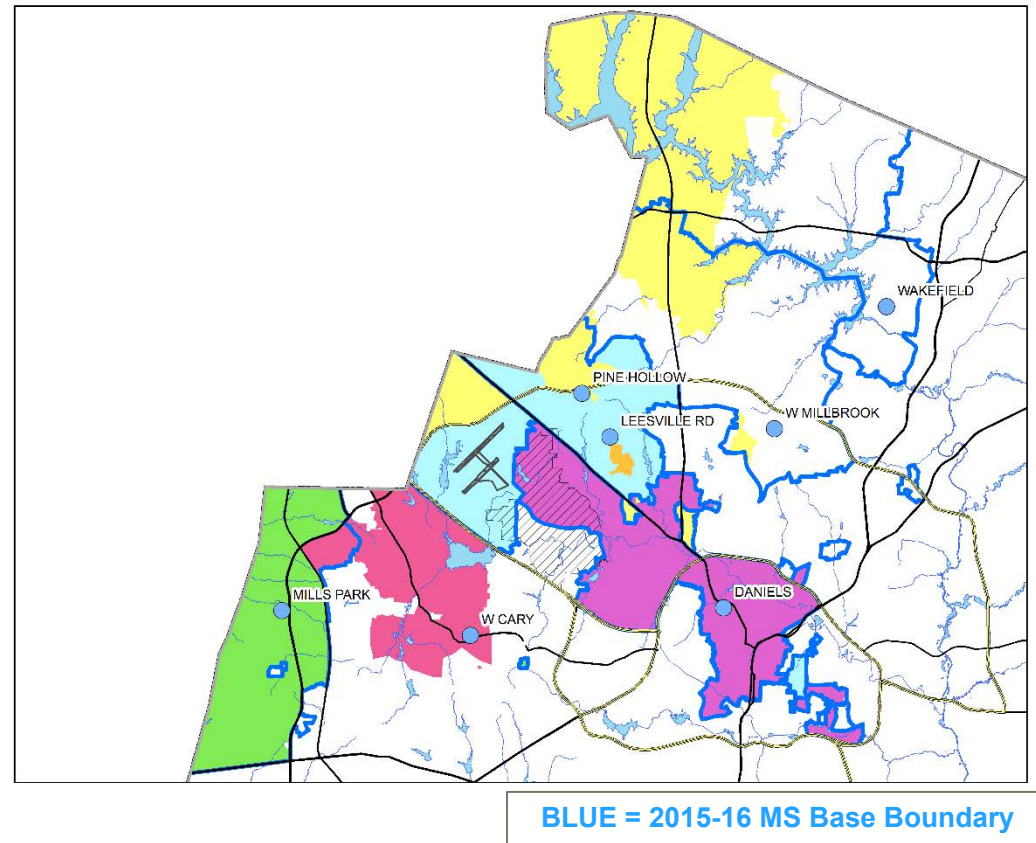
New School – Pine Hollow MS (2016-17)

**** Change for Draft 2**

- Middle School feeder for
 - Brier Creek ES
 - Sycamore Creek ES
 - Pleasant Union ES **
- Impact Area

Existing School	Util. *
Leesville Road MS	165%
Mills Park MS	111%
Wakefield MS	111%
West Millbrook MS	107%

2016-17 Base Areas



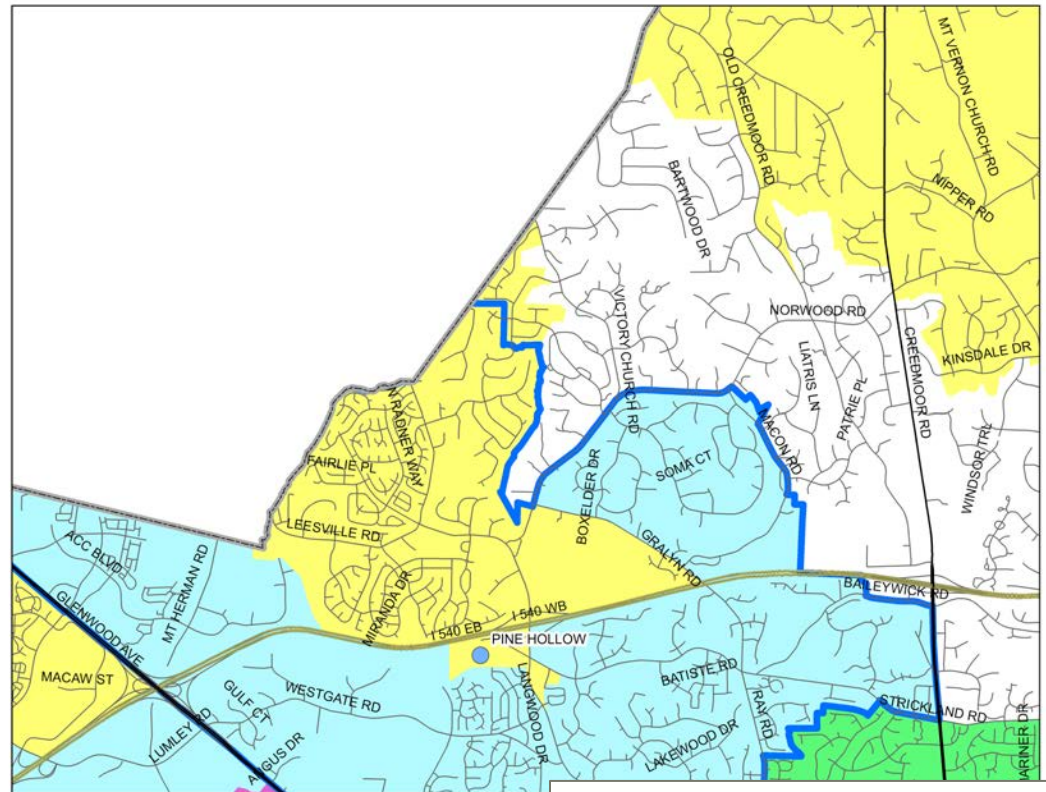
* Utilization based on 2014-15 NC DPI Month-2 ADM and 2014-15 Planned Capacity

New School – Pine Hollow MS (2016-17)

**** Change for Draft 2**

**** Correction to Draft 1 for neighborhoods northeast of Ray Road – These areas will remain at current assignment to Leesville Road MS.**

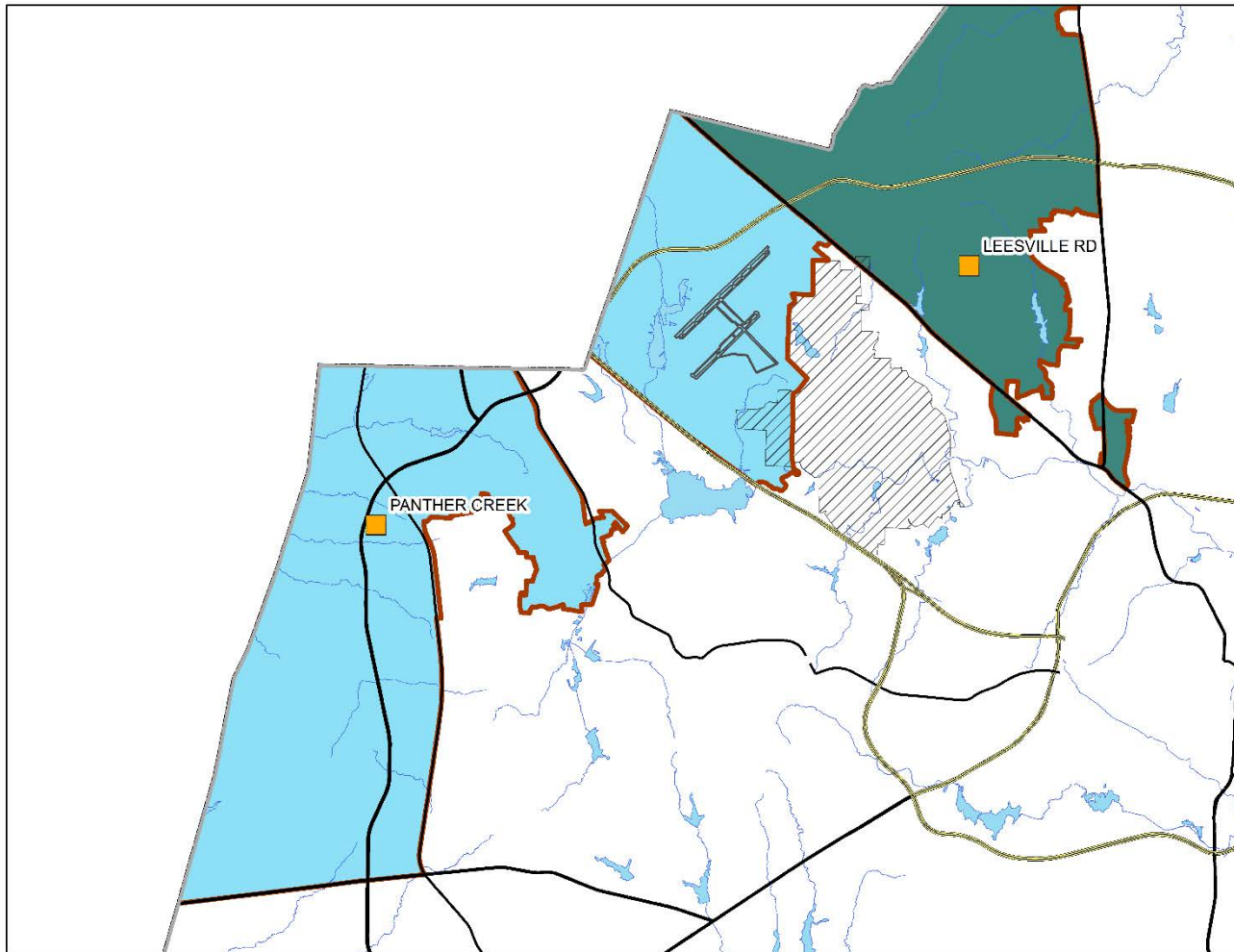
2016-17 Base Areas



BLUE = 2015-16 MS Base Boundary

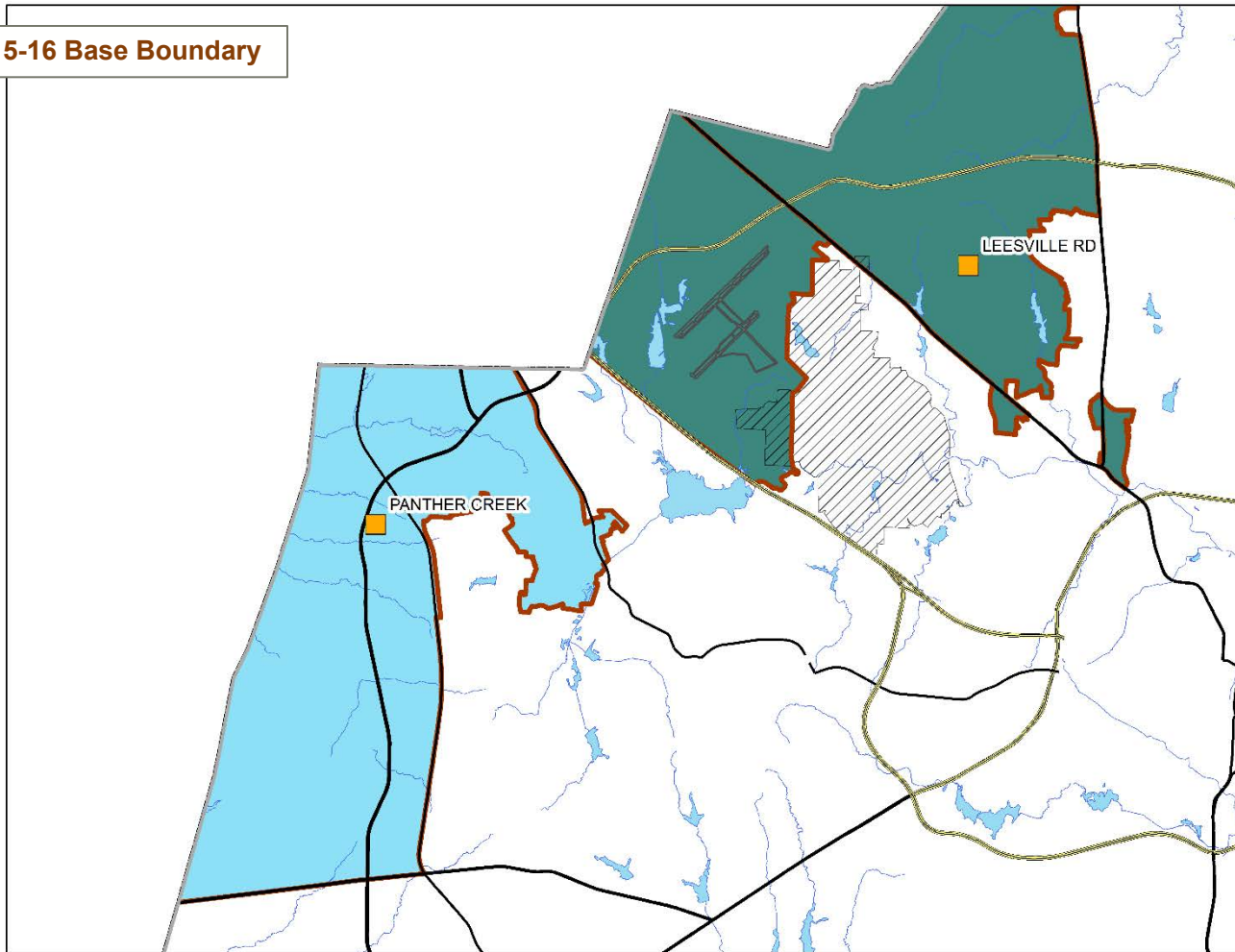
Panther Creek HS

2015-16 Base Areas



Panther Creek HS – 2016-17

BROWN = 2015-16 Base Boundary



Addressing Overcrowded and Under-Enrolled Schools

- Baileywick Elementary School (Under-Enrolled)
- Cedar Fork Elementary School (Overcrowded)
- Conn Elementary School (Overcrowded)
- Hunter Elementary School (Overcrowded)
- Weatherstone Elementary School (Under-Enrolled)
- Mills Park Middle School (Overcrowded)
- Heritage High School (Overcrowded)
- Panther Creek High School (Overcrowded)
- Hilburn Drive Academy, middle school grades (6-8) (Under-Enrolled)

Baileywick ES

- Impacting:
Baileywick ES
Jeffreys Grove ES

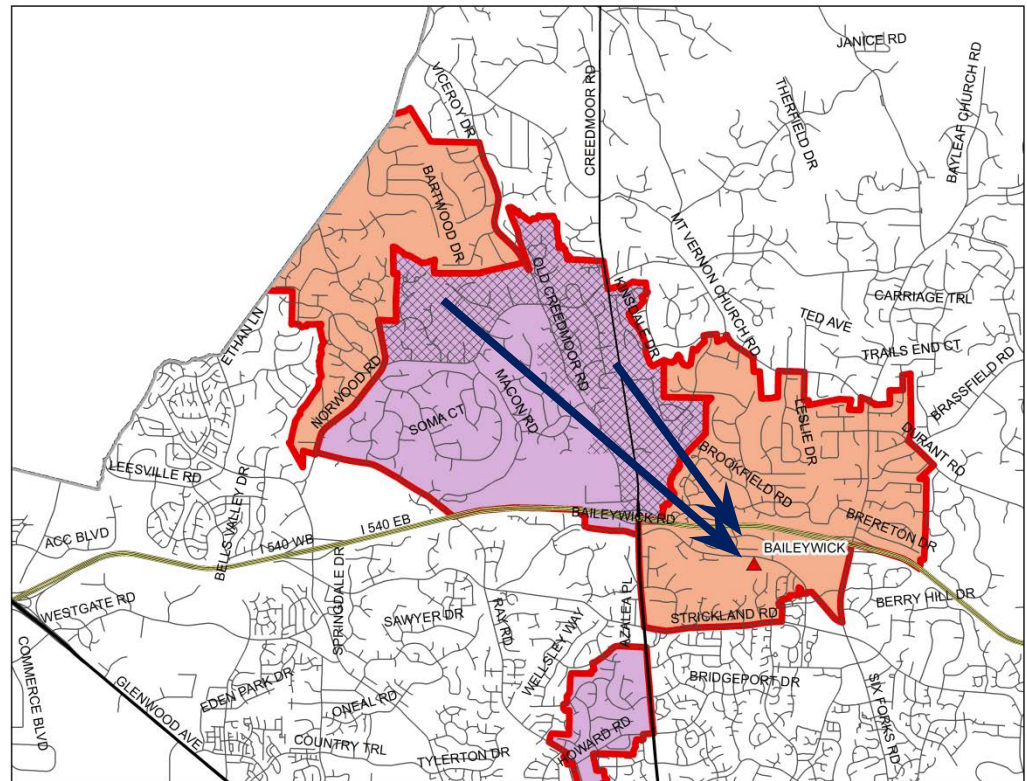
School	Util. *
Baileywick ES	91%
Jeffreys Grove ES	103%

Note: Students in the current base attendance areas would not fill the school even if all attended the school

Area Impacted



2015-16 Base Areas



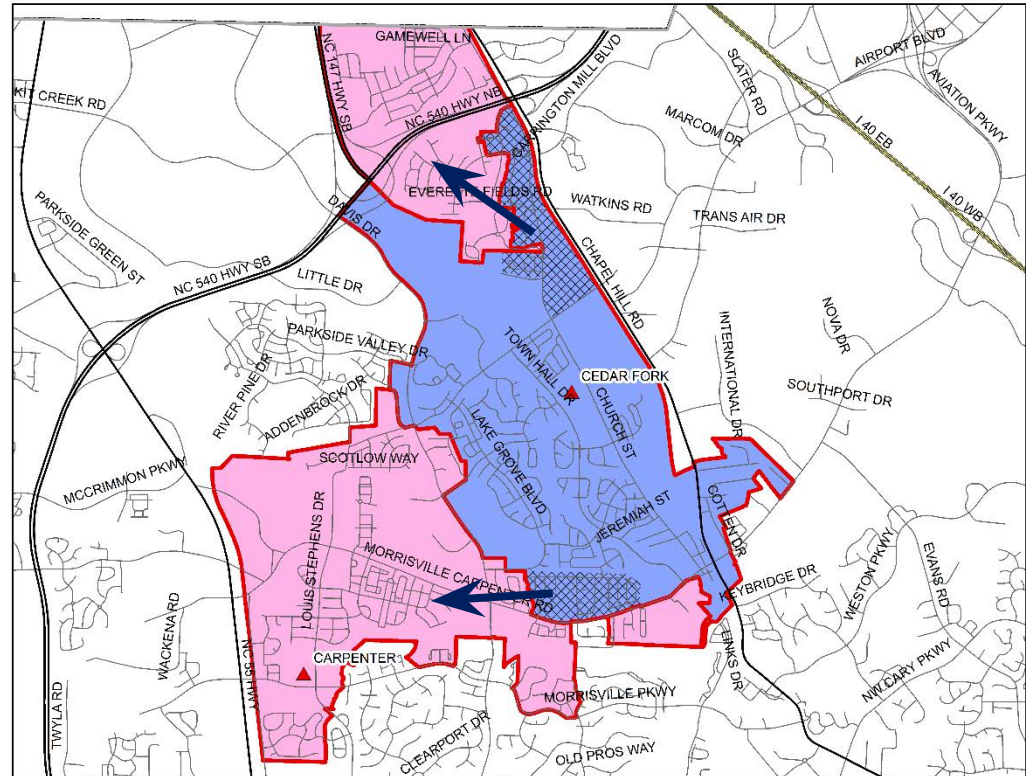
* Utilization based on 2014-15 NC DPI Month-2 ADM and 2014-15 Planned Capacity

Cedar Fork ES

- Impacting:
Carpenter ES
Cedar Fork ES

School	Util. *
Carpenter ES	96%
Cedar Fork ES	125%

2015-16 Base Areas



* Utilization based on 2014-15 NC DPI Month-2 ADM and 2014-15 Planned Capacity

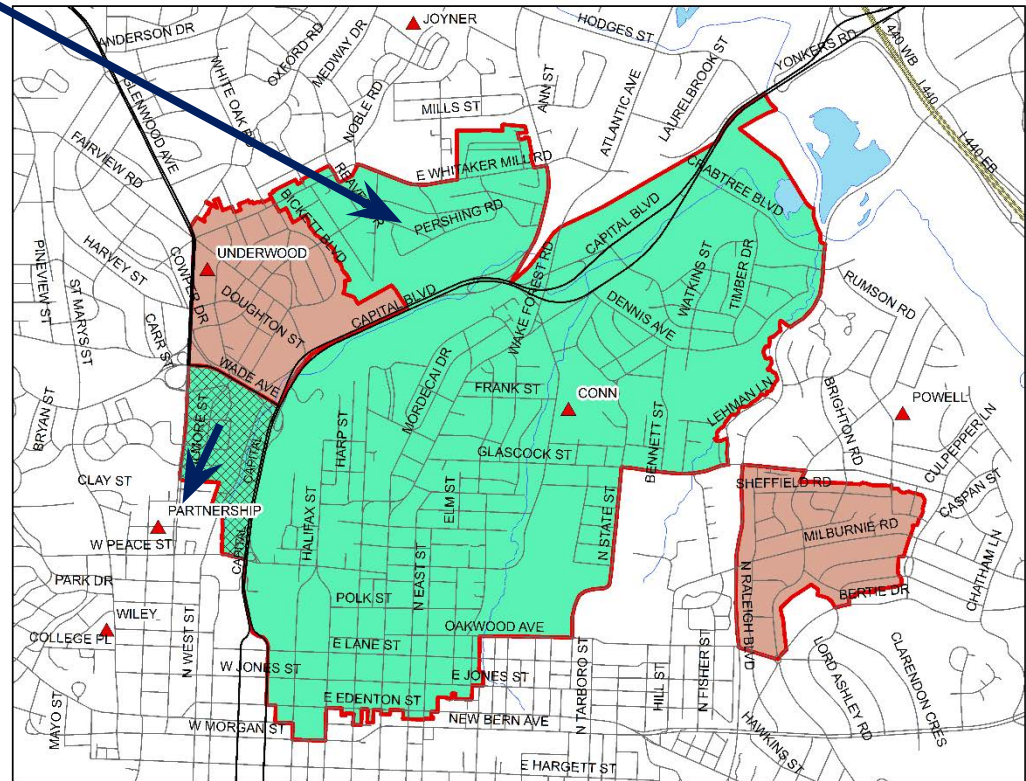
Conn ES

**** Change for Draft 2**

****Area to remain assigned to Conn ES until utilization at Underwood is further reduced.**

2015-16 Base Areas

School	Util. *
Conn ES	110%
Underwood ES	110%
Partnership	83%



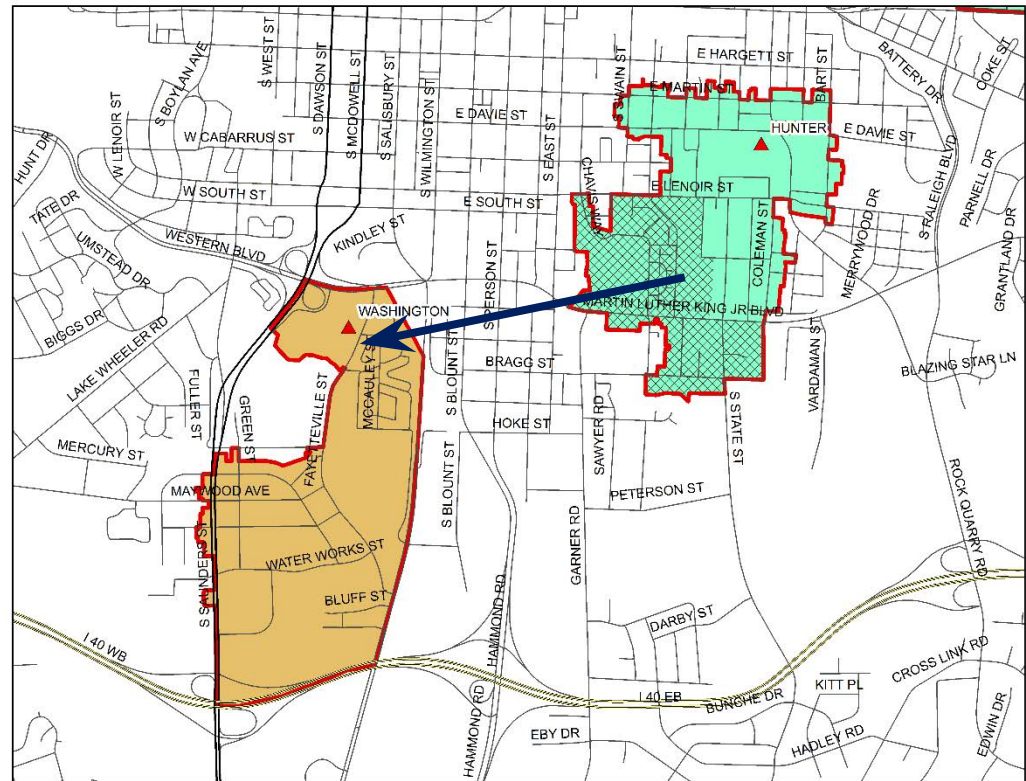
* Utilization based on 2014-15 NC DPI Month-2 ADM and 2014-15 Planned Capacity

Hunter ES

- Impacting:
Hunter ES
Washington ES

2015-16 Base Areas

School	Util. *
Hunter ES	134%
Washington ES	100%



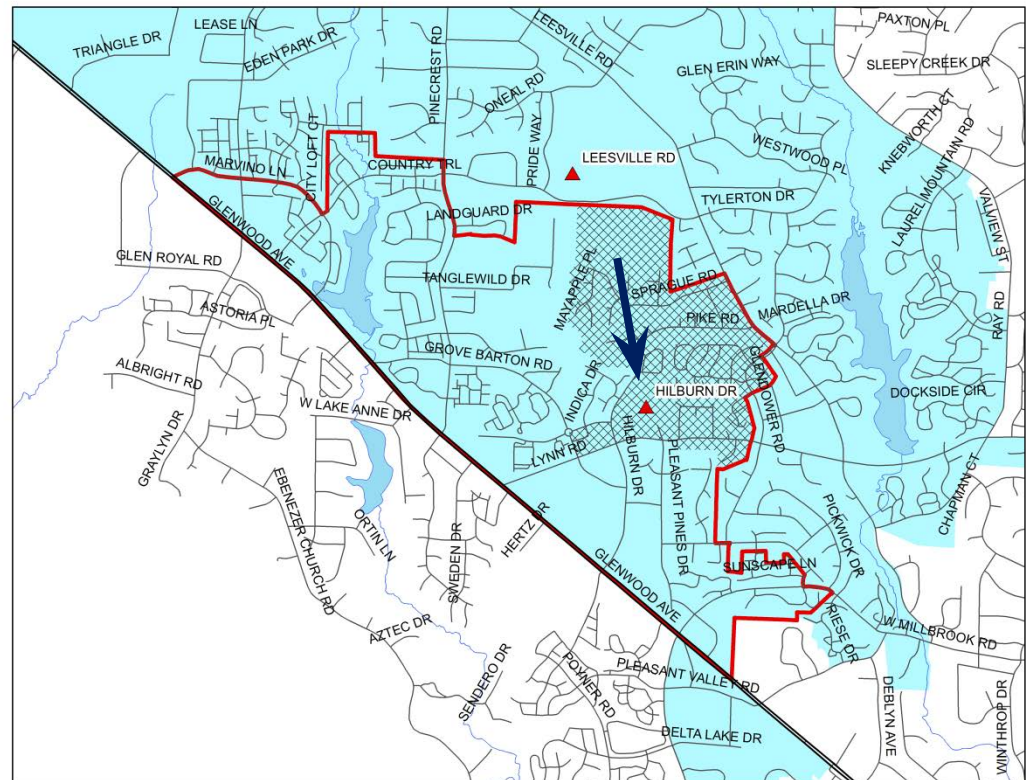
* Utilization based on 2014-15 NC DPI Month-2 ADM and 2014-15 Planned Capacity

Hilburn Drive Academy

- Base attendance area for grades 6-8
- Impacting:
Hilburn Drive Academy
Leesville Road MS

School	Util. *
Hilburn Dr. Academy	97%
Leesville Rd. MS	165%

2015-16 Base Areas



RED = 2015-16 ES Base Boundary

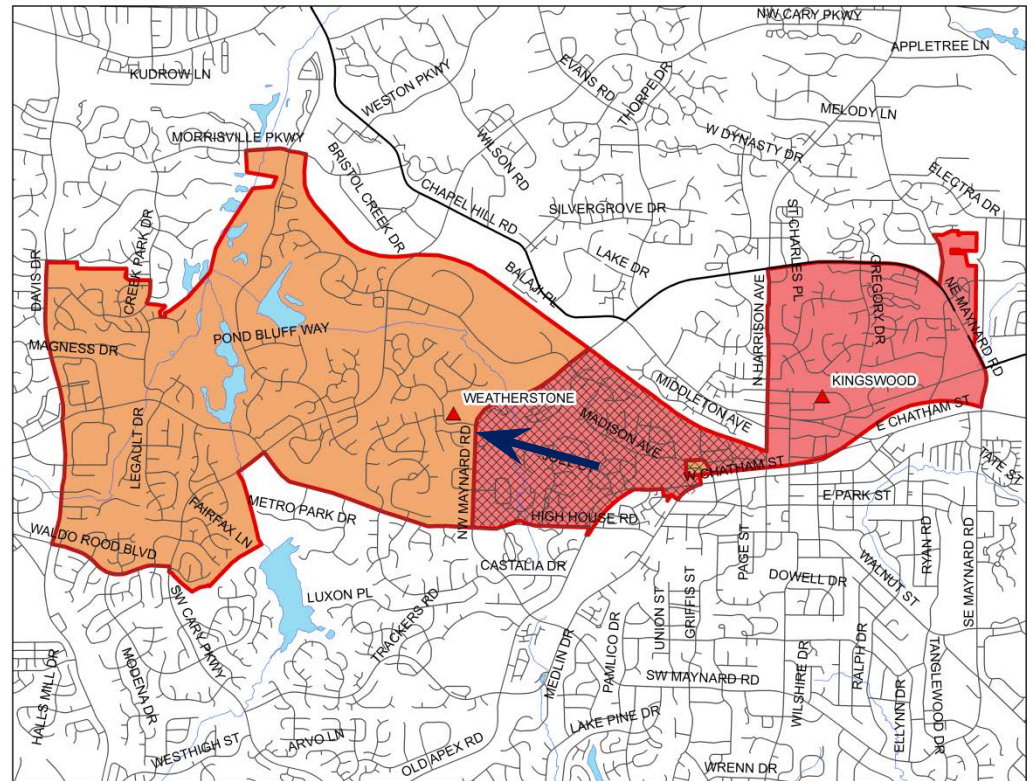
** Utilization based on 2014-15 NC DPI Month-2 ADM and 2014-15 Planned Capacity*

Weatherstone ES

2015-16 Base Areas

- Impacting:
Kingswood ES
Weatherstone ES

School	Util. *
Kingswood ES	87%
Weatherstone ES	123%



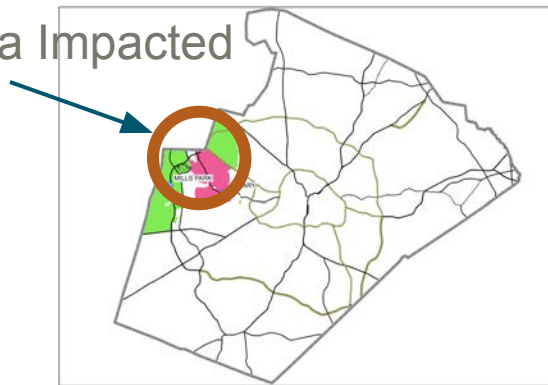
* Utilization based on 2014-15 NC DPI Month-2 ADM and 2014-15 Planned Capacity

Mills Park MS

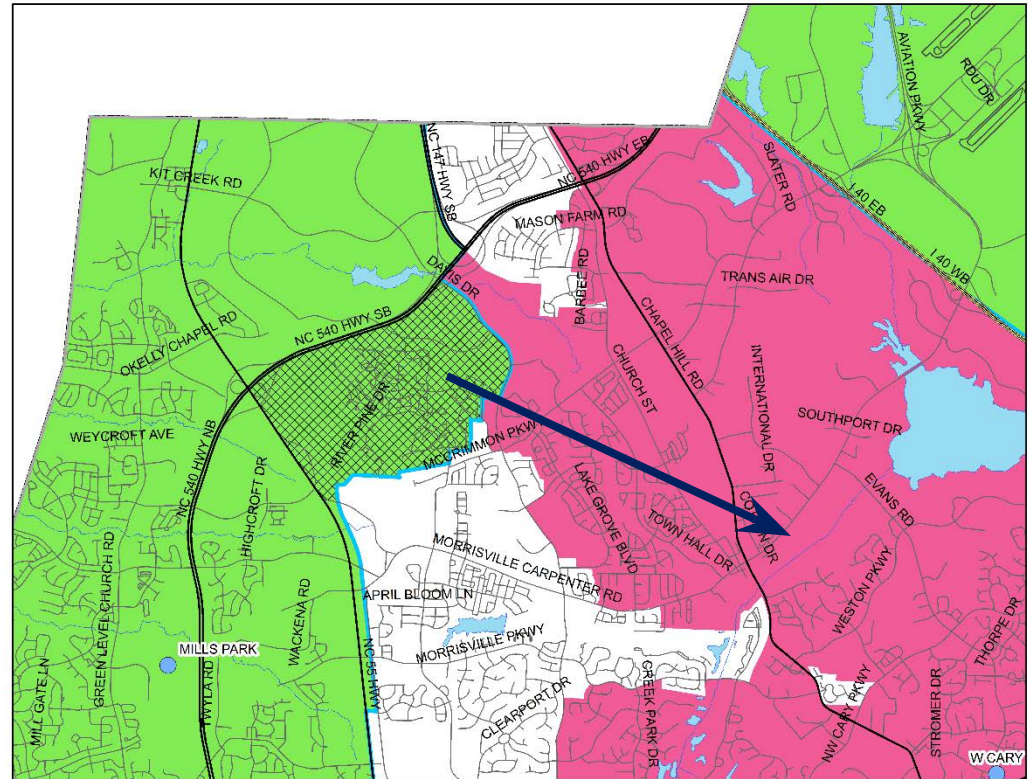
- Impacting:
Mills Park MS
West Cary MS

School	Util. *
Mills Park MS	111%
West Cary MS	81%

Area Impacted



2015-16 Base Areas



* Utilization based on 2014-15 NC DPI Month-2 ADM and 2014-15 Planned Capacity

Heritage HS

**** Change for Draft 2**

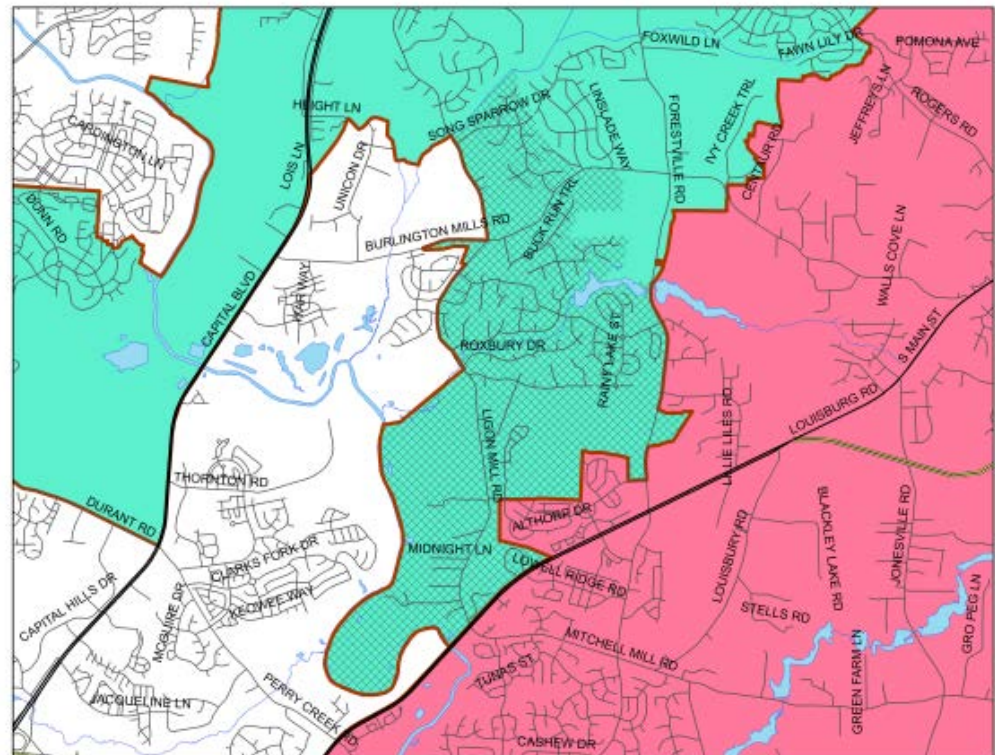
**** Area to remain
assigned to Heritage HS**

School	Util. *
Heritage HS	116%
Rolesville HS	51%

Area Impacted



2015-16 Base Areas



This area is currently assigned to Rolesville MS

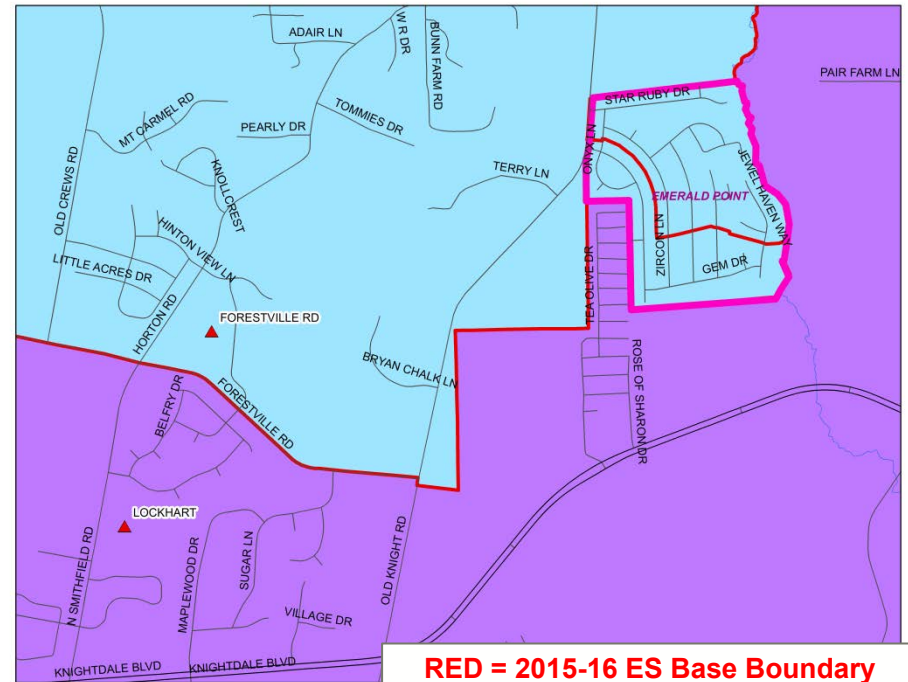
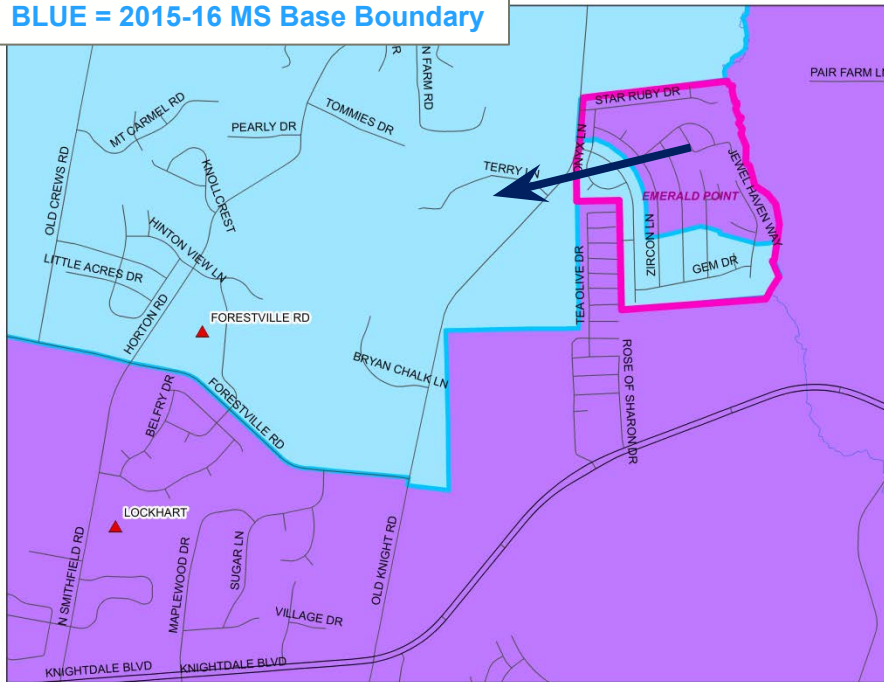
* Utilization based on 2014-15 NC DPI Month-2 ADM and 2014-15 Planned Capacity

Other Base Attendance Area Adjustments

Emerald Point Subdivision

Emerald Point is split between Forestville Road ES / Wendell MS and Lockhart ES / East Wake MS

BLUE = 2015-16 MS Base Boundary



RED = 2015-16 ES Base Boundary

Proposed Adjustment: Assign Emerald Point to Forestville Road ES / Wendell MS

Calendar Alignment

**** Change for Draft 2**

- Brooks ES – Traditional Calendar

Change MS base from Moore Square MS (Modified) to Carroll MS (Traditional)

- Sycamore Creek ES – Year-Round Calendar

Change MS base from Leesville MS (Traditional) to Pine Hollow MS (Year-Round)

- **** Pleasant Union ES – Year-Round Calendar**

Change MS base from Wakefield MS and West Millbrook MS (Traditional) to Pine Hollow MS (Year-Round)

Calendar Option Review

**** Change for Draft 2**

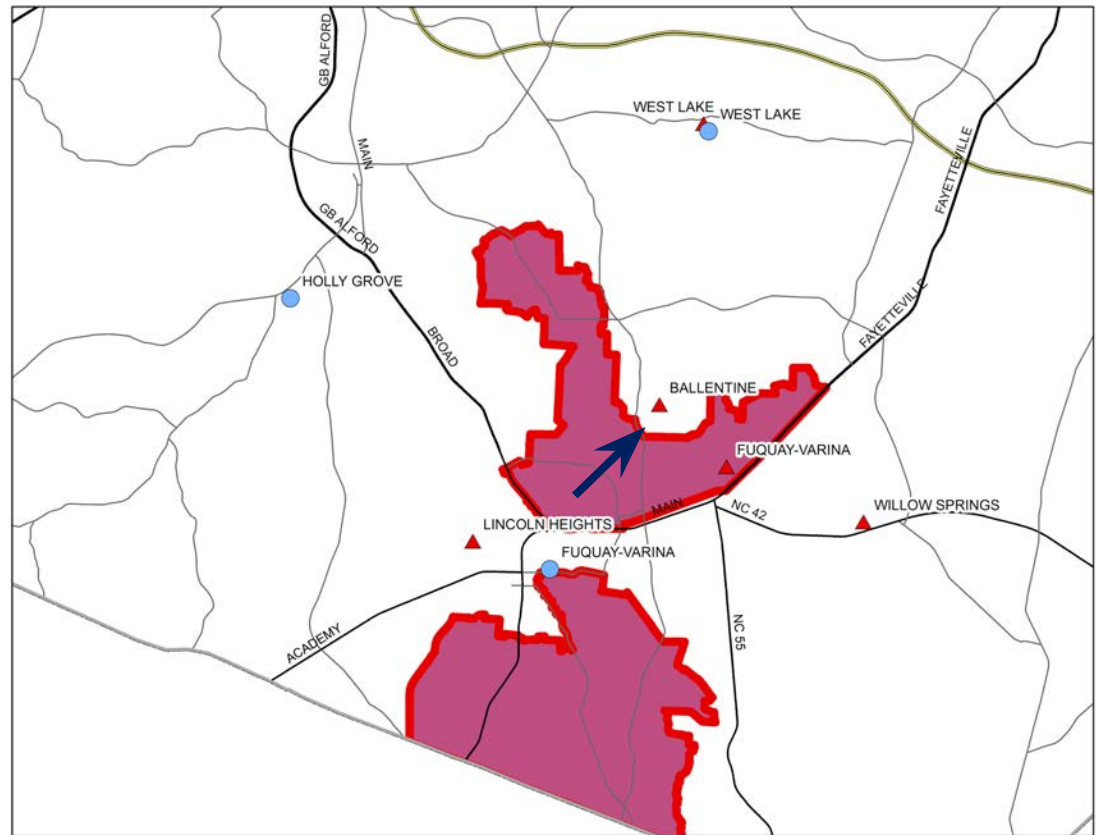
- Holly Springs ES – change the calendar options from Holly Ridge and Lincoln Heights to Holly Ridge and Oakview.
- Turner Creek ES – change the calendar options from Baucom and Weatherstone to Baucom and White Oak
- Salem MS – establish an application area for Salem MS: area of Mills Park MS base that is west of 540
- Sycamore Creek ES – change the calendar options from Baileywick and Leesville to ~~Baileywick and Pleasant Grove~~ Leesville only**.
- Highcroft Drive ES – Traditional Calendar (in 2016-17),
Year-Round Calendar Option: Turner Creek ES
- Wilburn ES – Year-Round Calendar
Traditional Calendar Option: Change from Forestville Road ES / Knightdale ES to Beaverdam ES
- Brier Creek ES – Year-Round Calendar
Traditional Calendar Option: Change from Reedy Creek ES / Weatherstone ES to Pleasant Grove ES

Calendar Option Review

**** Change for Draft 2**

**** Fuquay-Varina ES –**
Change calendar options
from West Lake ES and
Willow Springs ES to
Ballentine ES and Willow
Springs ES.

School	Util. *
Ballentine ES	73%
West Lake ES	125%



* Utilization based on 2014-15 NC DPI Month-2 ADM and 2014-15 Planned Capacity

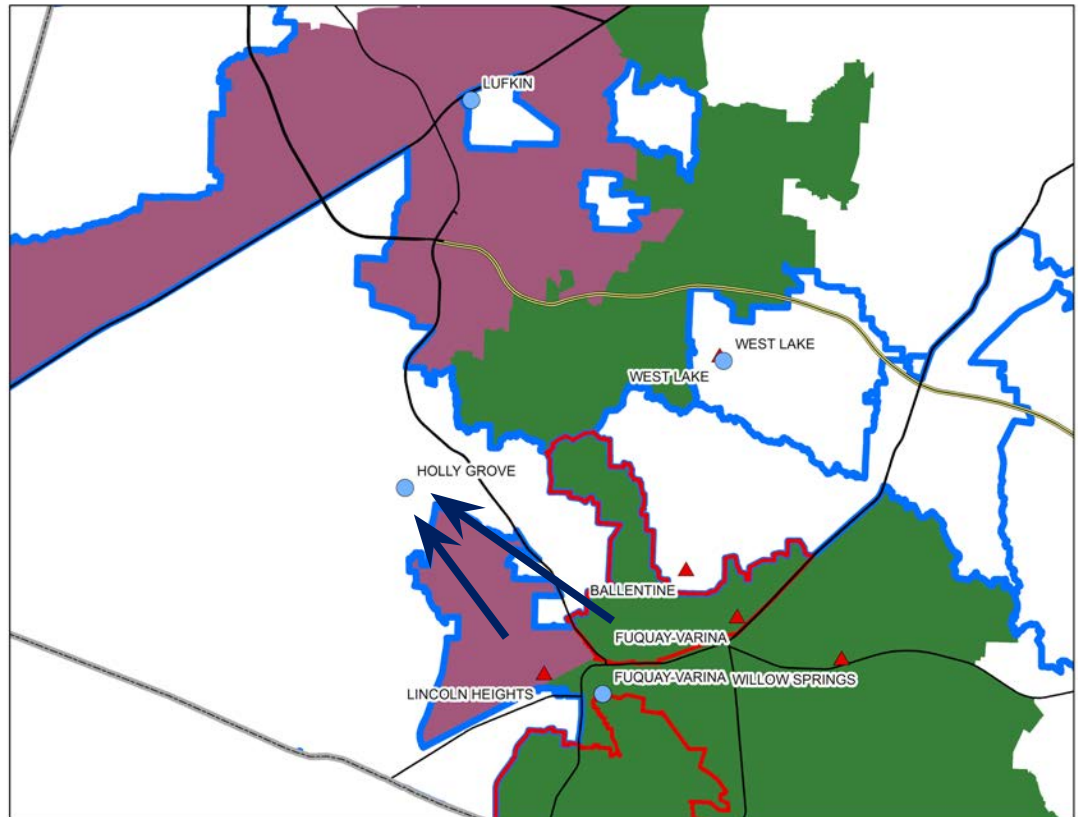
Calendar Option Review

**** Change for Draft 2**

**** Change the middle school calendar option for the Fuquay-Varina ES base from West Lake MS to Holly Grove MS**

**** Change the middle school calendar option for Lincoln Heights ES base from Lufkin Road MS to Holly Grove MS**

School	Util. *
Holly Grove MS	88%
Lufkin Road MS	86%
West Lake MS	118%

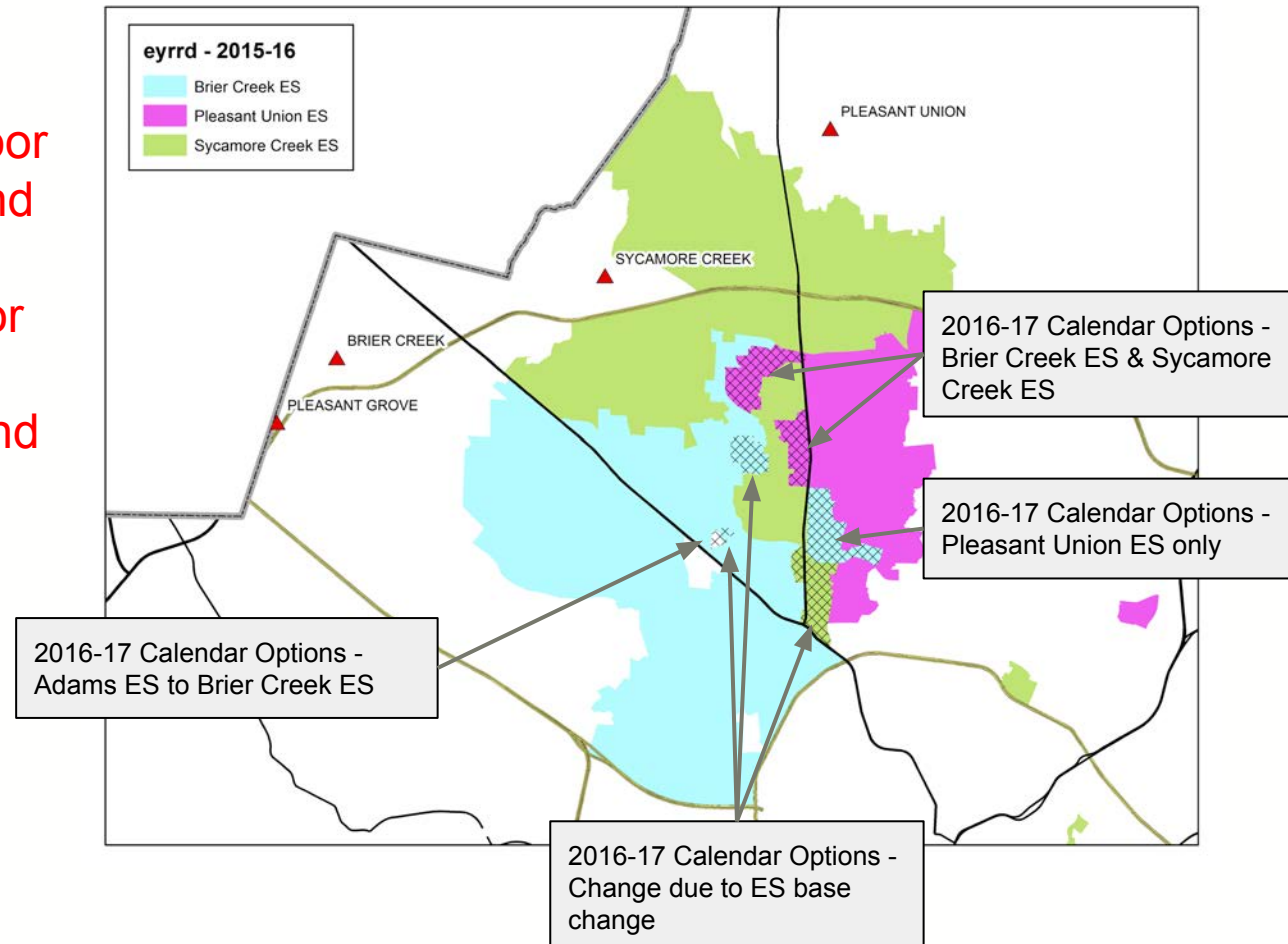


* Utilization based on 2014-15 NC DPI Month-2 ADM and 2014-15 Planned Capacity

Calendar Option Review

**** Change for Draft 2**

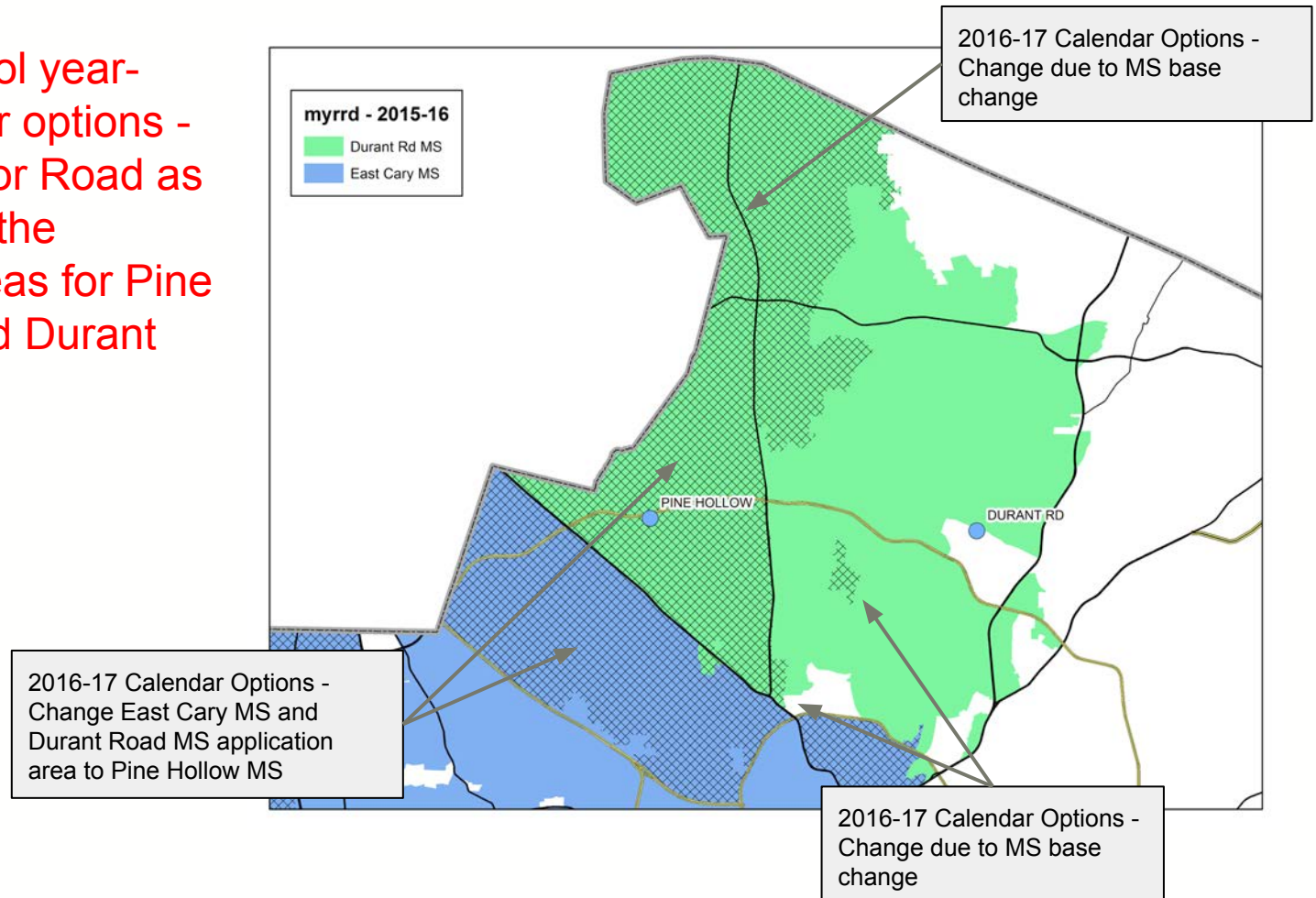
****Elementary School year-round calendar options - Use Creedmoor Road south of Strickland Road as the divider for the application areas for Brier Creek ES / Sycamore Creek ES and Pleasant Union ES.**



Calendar Option Review

**** Change for Draft 2**

****Middle School year-round calendar options -
Use Creedmoor Road as
the divider for the
application areas for Pine
Hollow MS and Durant
Road MS**



Calendar Option Review

**** Change for Draft 2**

Elimination of under-utilized calendar options - students at removed option moved to remaining option

School	Cal Option 1	Cal Option 2
Carver ES	Knightdale ES	Forestville Rd ES
Forestville Rd ES	Jones Dairy ES	Lockhart ES
Lincoln Heights ES	Herbert Akins ES	Willow Springs ES
Oak Grove ES	Penny Rd ES	Yates Mill ES
Smith ES	Timber Dr ES	Vance ES
Stough ES	Brier Creek ES	Sycamore Creek ES
Vandora Springs ES	Timber Dr ES	Rand Rd ES
Sycamore Creek ES	Baileywick ES	Leesville ES

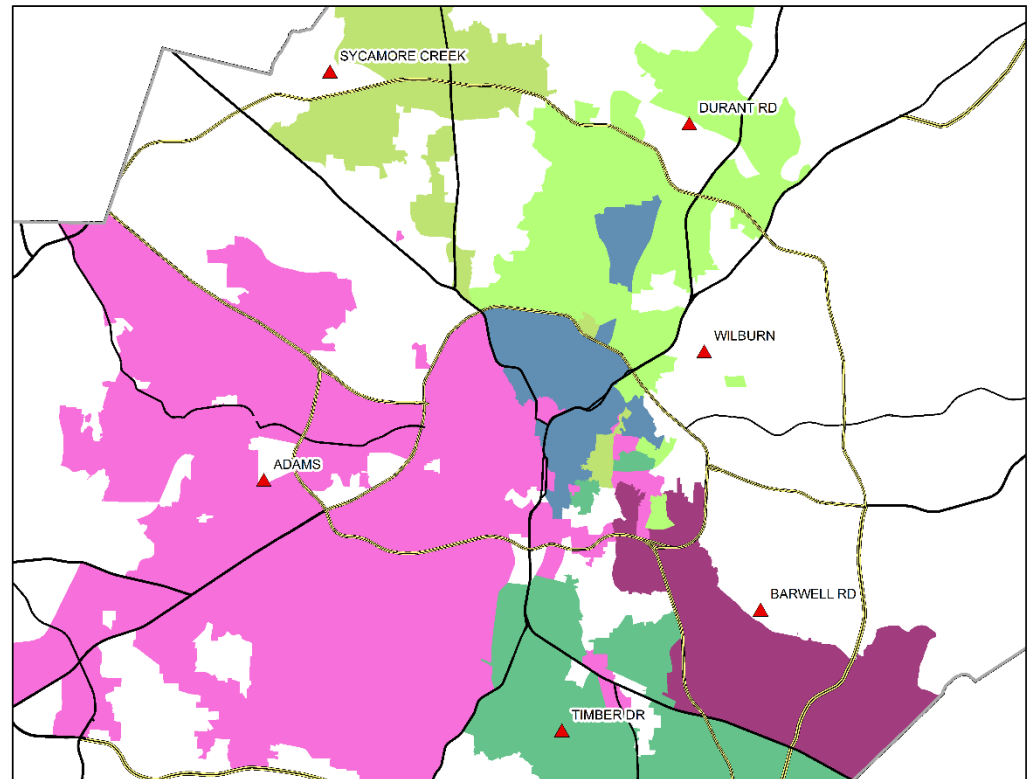
Calendar Option change due to Highcroft Dr ES transition to TRAD calendar in 2016-17

Mills Park ES	Highcroft Dr ES <i>Turner Creek ES</i>	Alston Ridge ES
---------------	--	-----------------

Calendar Option Review

- Transportation Inefficiencies – ES Year-Round Calendar Options

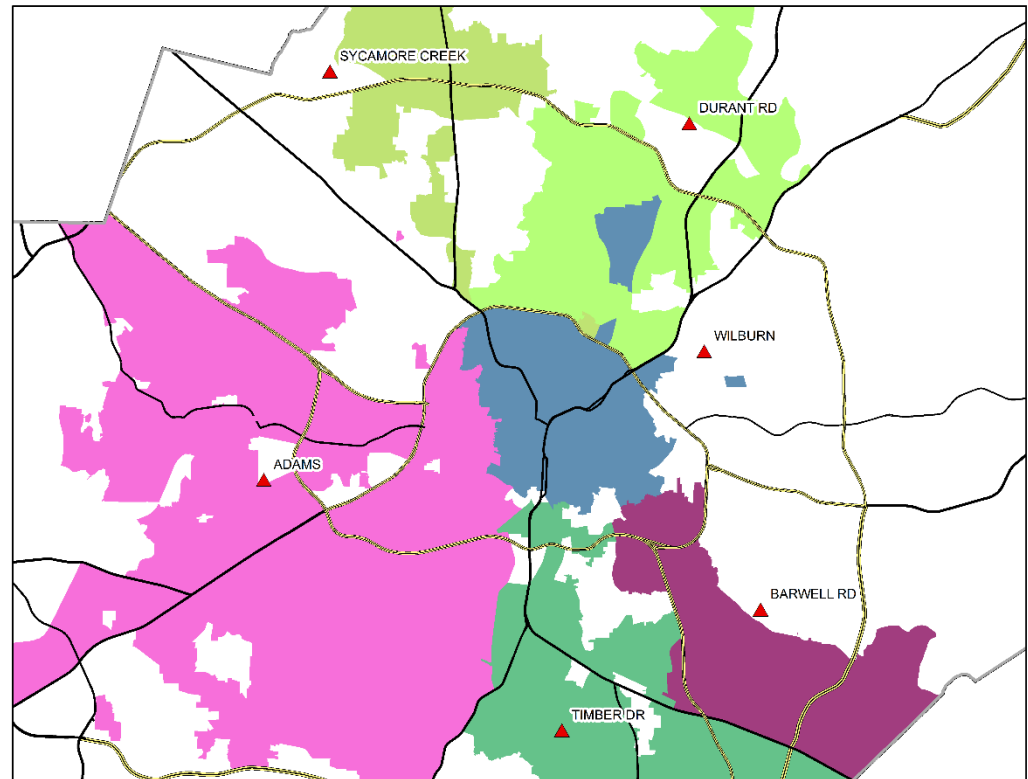
2015-16 YR Application Areas - Elementary



Calendar Option Review

- Proximity-Driven
Year-Round ES
Calendar Options

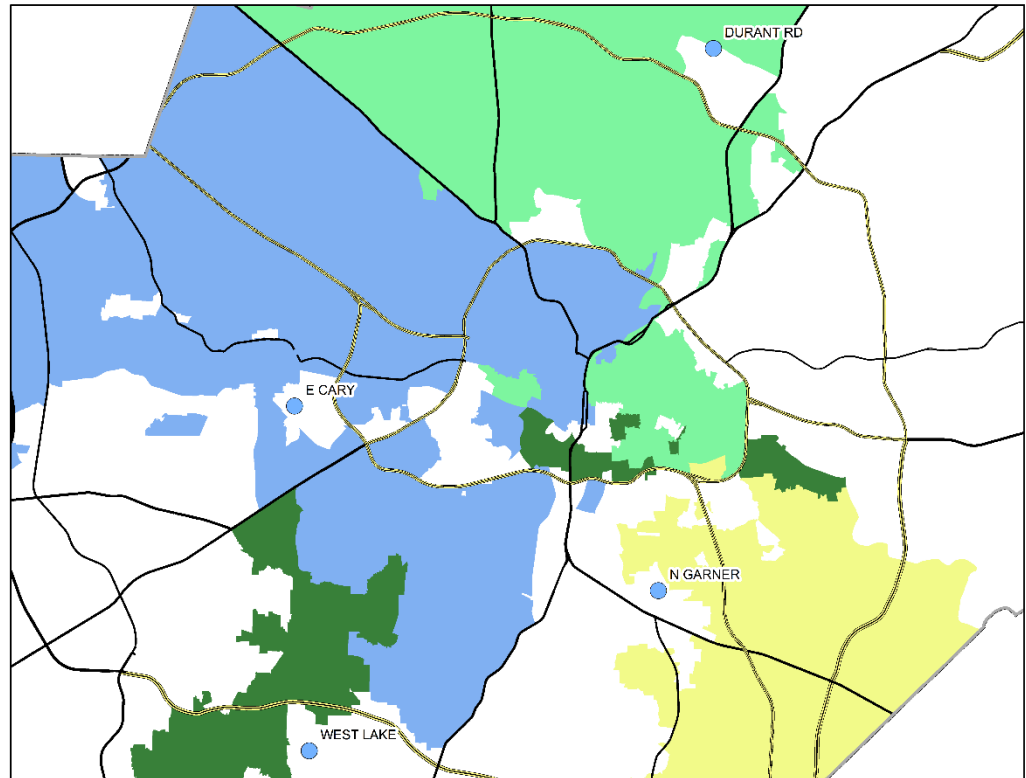
2016-17 YR Application Areas - Elementary



Calendar Option Review

- Transportation Inefficiencies – MS Year-Round Calendar Options

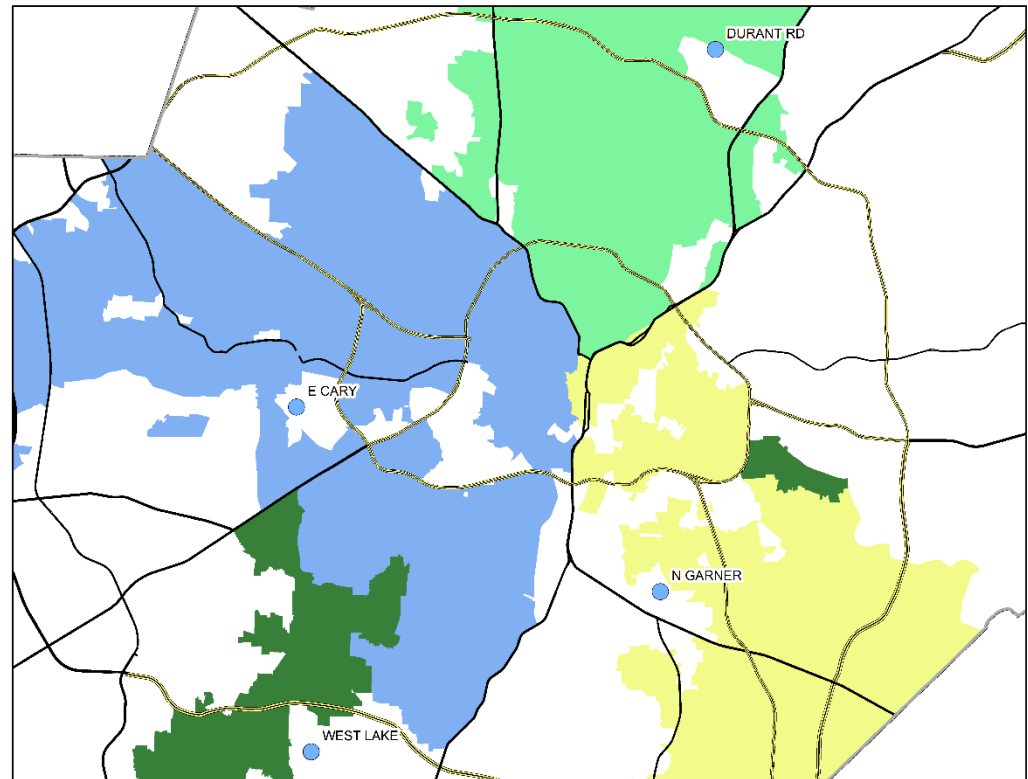
2015-16 YR Application Areas - Middle



Calendar Option Review

- Proximity-Driven
Year-Round MS
Calendar Options

2016-17 YR Application Areas - Middle



Grandfathering

No District Transportation Provided

Board Policy 6200

- Students will have the opportunity to stay at the same school with their siblings through the exit grade without experiencing involuntary changes in school assignment.
- **However**, when assignments are necessary for the opening of a new school this may not be guaranteed, and **no transportation will be provided**.

Grandfathering, Cont.

No District Transportation Provided

From an existing school to a new school

- For any student who experiences an assignment change as a result of this proposal **from an existing school to a new school**, a request to “grandfather” will be approved for students rising into grades 4, 5, 8, 11, and 12 only.
- Siblings of these “grandfathered” students can request a **transfer** to attend the same school with their sibling. These requests will be approved.
- Students who request to grandfather are **transfer** students and **no transportation will be provided**.

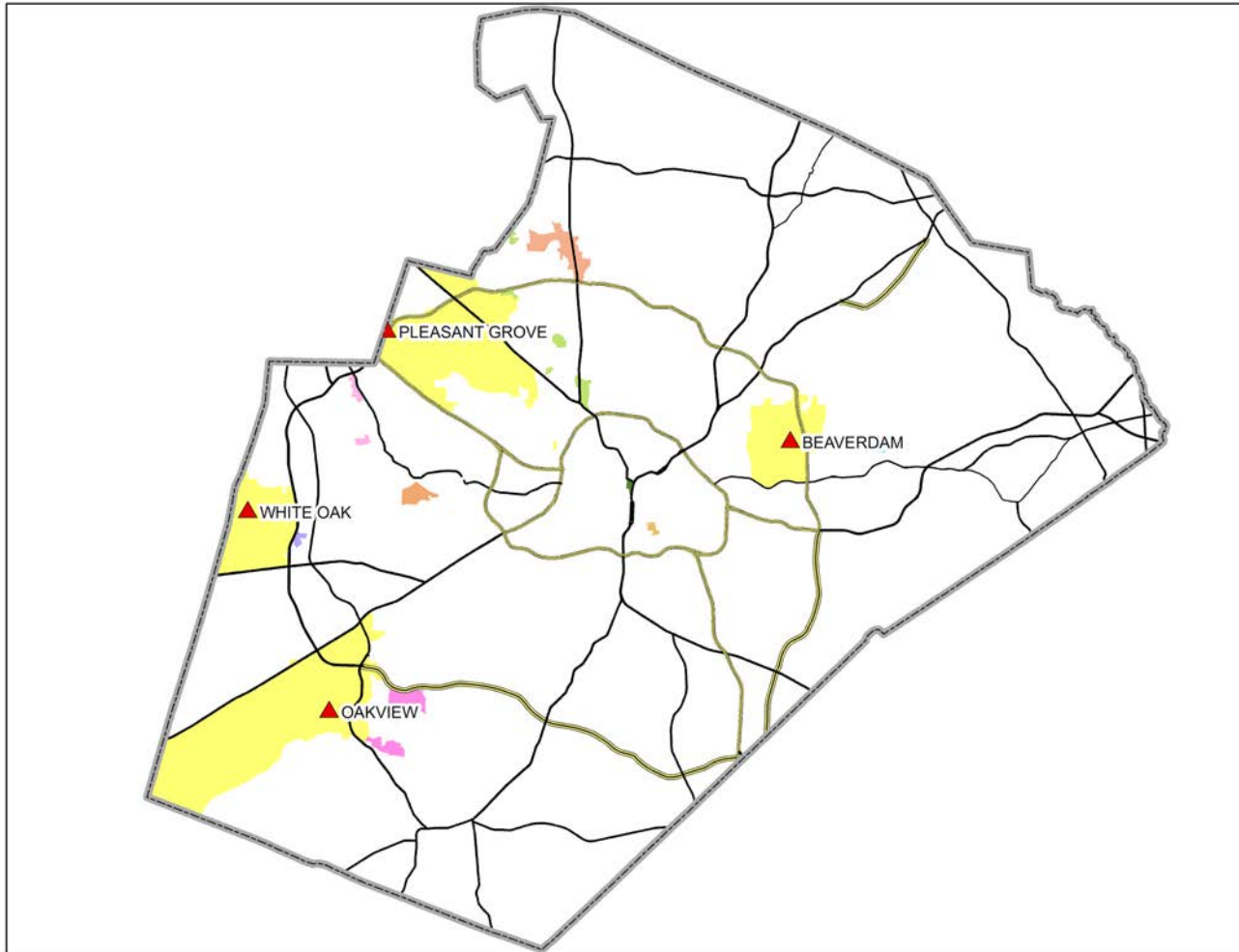
Grandfathering, Cont.

No District Transportation Provided

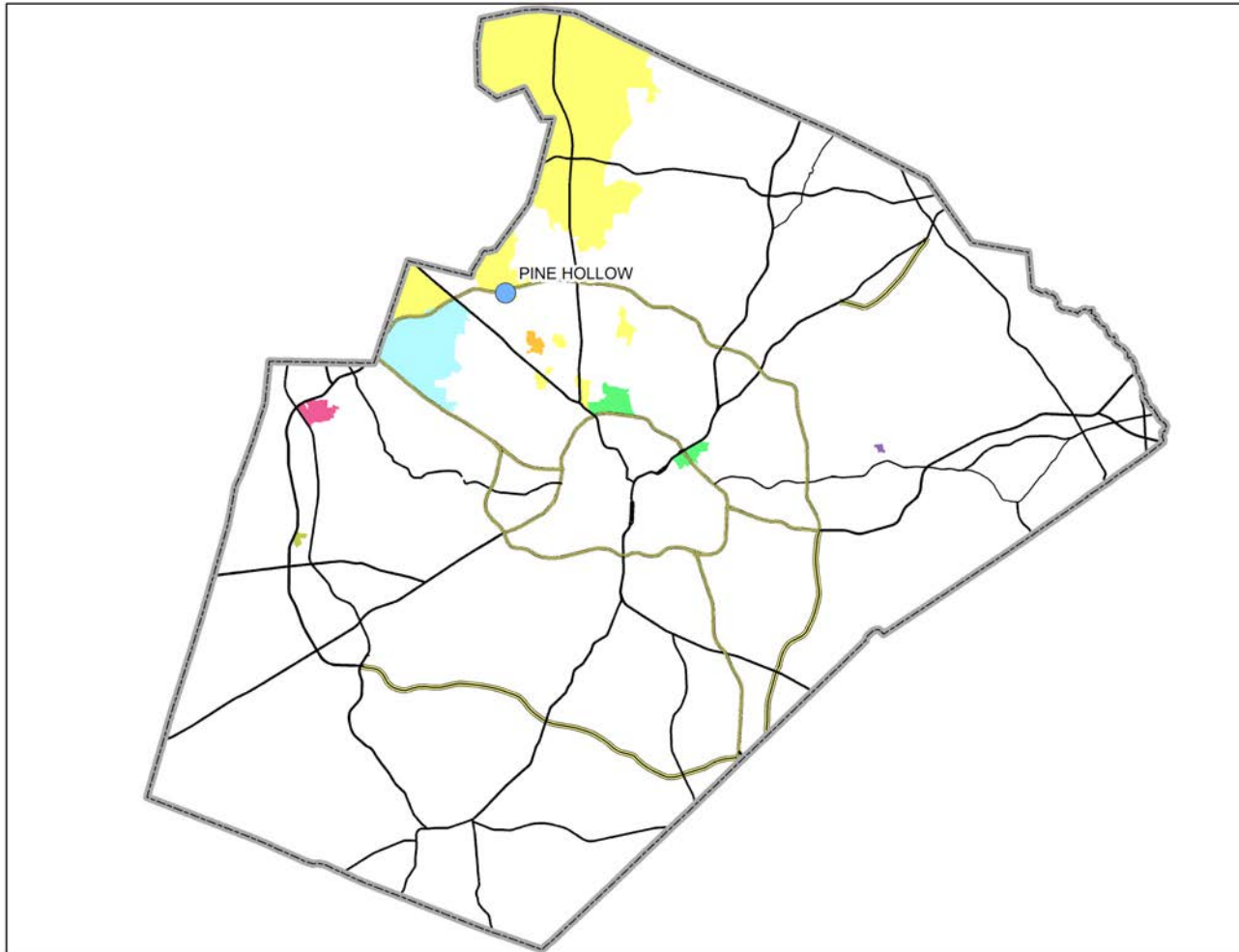
From an existing school to an existing school

- For any student who experiences an assignment change as a result of this proposal **from an existing school to an existing school**, all students are eligible to request a **transfer** to “grandfather” at their current assignment. These requests will be approved.
- Siblings of these “grandfathered” students can request a **transfer** to attend the same school with their sibling. These requests will be approved.
- Students who request to grandfather are **transfer** students and **no transportation will be provided**.

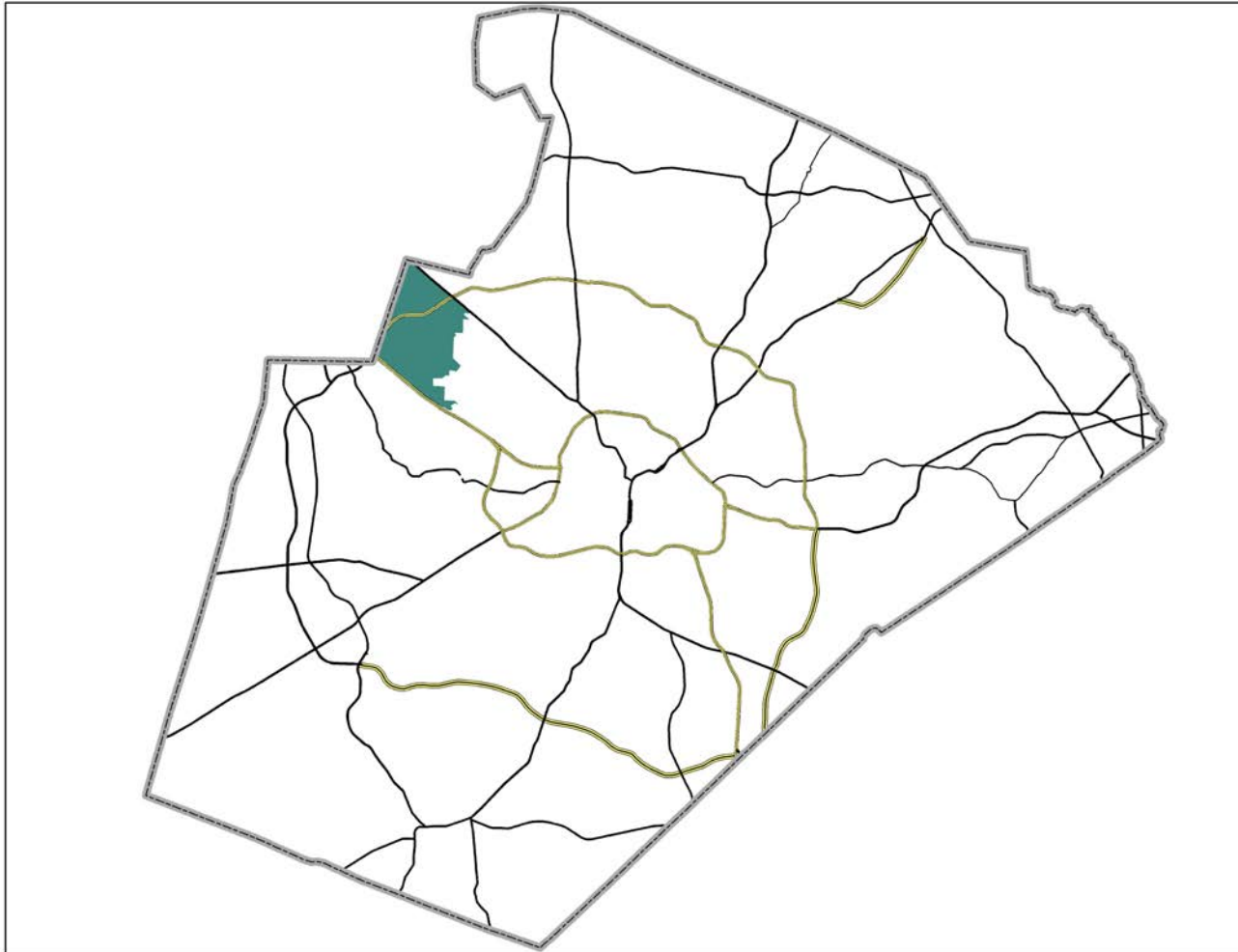
District-Wide Impact - Elementary



District-Wide Impact - Middle



District-Wide Impact - High



Public Information

- Updated information on Draft 2 will be posted at **wcpss.net/newenrollmentplan**
- We will continue to gather online feedback at **wcpss.granicusideas.com/discussions**
- Public information sessions will be held at 7 p.m. at the following schools:
 - **Scotts Ridge Elementary, Oct. 8**
 - **Leesville Road High School, Oct. 12**
 - **River Bend Elementary, Oct. 15**

Bookmark This Page

- www.wcpss.net/newenrollmentplan



- Contains information, maps and links to address lookup tool and online forum

Process Timeline

DATES	ACTIONS
May 19	BoE Work Session – review/discuss needs for 2016-17 enrollment plan; seek board input on direction
August 18	BoE Work Session – staff presents Draft 1 of the 2016-17 enrollment plan; begin feedback process through online forums; presents preliminary enrollment maps for 2017-18 and 2018-19; begin feedback process through online forums
August/September	Staff presents Draft 1 through BoE Advisory Committees <i>District 2 - Sept 23, District 3 - Sept 9, District 5 - Sept 14, District 6 - Sept 10, District 7 - Sept 9, District 8 - Sept 14, District 9 - Aug 31</i>
October 6	BoE Work Session – staff presents Draft 2 of the enrollment plan; continue to solicit feedback through online forums
October 8	Public information session - Scotts Ridge ES
October 12	Public information session - Leesville Road HS
October 15	Public information session - River Bend ES
October 20	BoE Work Session – staff presents Draft 3 of the enrollment plan; all feedback is presented to board members via online forums
November 3	BoE Public Hearing
November 17	BoE Work Session to review/discuss/revise Draft 3 and prepare final enrollment plan for board approval
December 1	BoE Meeting - board approves 2016-17 enrollment plan

Addendum

- WCPSS Board Policy 6200 Details
- Detailed maps for all schools impacted by the Draft 1 proposal
- Detailed maps for all schools impacted by the Draft 2 proposal

A. Student Achievement

WCPSS Board Policy 6200

“Student populations at each school will provide an optimal opportunity for academic success for all students.

Factors for consideration include:

1. Providing an opportunity for families to select calendar, magnet, and application schools to support an individual student's educational needs;
2. Minimizing high concentrations of low-performing students at each school; and
3. Minimizing high concentrations of students from low income families at each school.”

B. Stability

WCPSS Board Policy 6200

“Students will have the opportunity to stay at the same school with their siblings through the exit grade without experiencing involuntary changes in school assignment. However, when reassignments are necessary for the opening of a new school this may not be guaranteed.

Factors for consideration include:

1. Providing an opportunity for students to remain at the school which they are attending (stay where you start), grandfathering guidelines;
2. Providing an opportunity for siblings to attend the same school at the same time; and
3. Providing an opportunity for year-round track/calendar alignment for siblings.”

(B-2) Opportunities for siblings to attend the same school

- Same school and same track
- We guarantee siblings acceptance through each of the application processes.
- Principals work to coordinate and balance track assignments.

C. Proximity

WCPSS Board Policy 6200

“Base school assignments will be within a reasonable distance of the student's home.

Factors for consideration include:

1. Allowing students living within the immediate vicinity of a school, defined by the assignment plan, to attend that school; and
2. Minimizing splitting of neighborhoods when developing base attendance areas.”

D. Operational Efficiency

WCPSS Board Policy 6200

“Assignments will optimize the use of school facilities and transportation resources.

Factors for consideration include:

1. Minimizing under-enrolled schools;
2. Minimizing overcrowded schools; and
3. Maximizing transportation efficiencies”.